

Jigsaw

Jigsaw is a geometrical sans serif font family with a nearly monolinear stroke width and primary skeletal letterforms. Jigsaw is particularly suitable for larger architectural applications where its letter shapes are more distinctive.

AVAILABLE IN

Latin

MORE

Rent

Buy Jigsaw

- 2 Family Overview
- 3 Design Information
- 4 Latin
- 13 OpenType Features
- 16 Credits & Information

Type Family Overview

STYLES

Jigsaw comes in 24 styles,
available as static font files
or Variable Font families.

Jigsaw

Light *Italic Cursive*
Regular *Italic Cursive Cursive*
Medium *Italic*
Bold *Italic Cursive*

Jigsaw Stencil

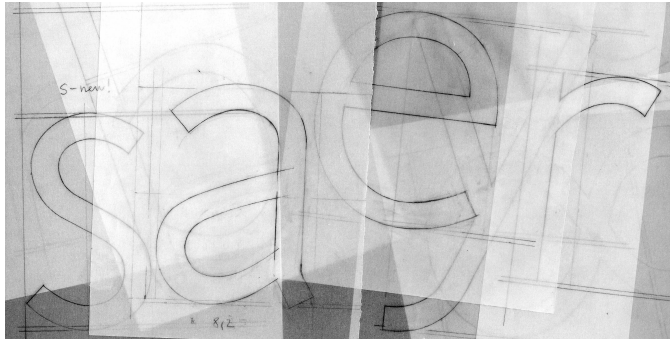
Light *Italic Cursive*
Regular *Italic Cursive Cursive*
Medium *Italic*
Bold *Italic Cursive*

- 2 Family Overview
- 3 Design Information
- 4 Latin
- 13 OpenType Features
- 16 Credits & Information

Design Information

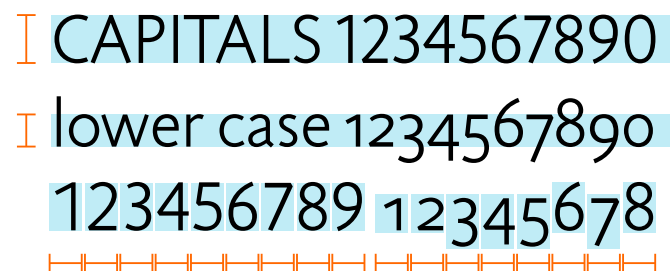
Design concept

Jigsaw is a geometrical sans serif font family with a nearly monolinear stroke width. In its development, the primary skeletal letterforms provided a foundation for subsequently derived stencil versions, which were later expanded into four weights. Jigsaw has been successfully used in print as well as in larger architectural applications. At larger sizes, the letter 'g' is particularly distinctive. As a text font, Jigsaw has a spirited yet balanced appearance.



Numeral styles

Each weight of Jigsaw includes six different kinds of numerals. Proportional lining figures come as default figures in Jigsaw. It also, however, includes old-style figures, tabular numerals (both lining and old-style) and superior and inferior numerals. For the running text, old-style figures work best; for use in capital setting, use lining figures.



- 2 Family Overview
- 3 Design Information
- 4 **Latin**
- 4 **Jigsaw**
- 9 Jigsaw Stencil
- 12 Character Set
- 13 OpenType Features
- 16 Credits & Information

Rent

Buy Jigsaw

Amsterdam

Light | 38pt

Copenhagen

Light Cursive | 38pt

Edinburgh

Regular Italic | 38pt

Guangzhou

Medium Cursive | 38pt

Istanbul

Medium Italic | 38pt

Kathmandu

Bold Italic | 38pt

Bengaluru

Light Italic | 38pt

Damascus

Regular | 38pt

Fortaleza

Regular Cursive | 38pt

Hong Kong

Medium | 38pt

Jerusalem

Bold | 38pt

Luxembourg

Bold Cursive | 38pt

Le Monde est l'espace habité et connu par les différ

Light | 32pt

Le Monde est l'espace habité et connu par les diffé

Regular | 32pt

Le Monde est l'espace habité et connu par les dif

Medium | 32pt

Le Monde est l'espace habité et connu par les d

Bold | 32pt

Le Monde est l'espace habité et connu par les différe

Light Italic | 32pt

Le Monde est l'espace habité et connu par les différer

Light Cursive | 32pt

Le Monde est l'espace habité et connu par les diffé

Regular Italic | 32pt

Le Monde est l'espace habité et connu par les différ

Regular Cursive | 32pt

Le Monde est l'espace habité et connu par les diff

Medium Cursive | 32pt

Le Monde est l'espace habité et connu par les difl

Medium Italic | 32pt

Le Monde est l'espace habité et connu par les d

LE MONDE EST L'ESPACE HABITÉ ET CONNEXES SOCIÉTÉS. Le mot renvoie à l'appropriation collective d'un espace dédié par une société, sa représentation renvoie à l'évolution des techniques de mesure. Le monde est le plus grand des espaces dans l'échelle des territoires.

Light | 18/22pt

LE MONDE EST L'ESPACE HABITÉ ET CONNEXES SOCIÉTÉS. Le mot renvoie à l'appropriation collective d'un espace dédié par une société, sa représentation renvoie à l'évolution des techniques de mesure. Le monde est le plus grand des espaces dans l'échelle des territoires.

Regular | 18/22pt

LE MONDE EST L'ESPACE HABITÉ ET CONNEXES SOCIÉTÉS. Le mot renvoie à l'appropriation collective d'un espace dédié par une société, sa représentation renvoie à l'évolution des techniques de mesure. Le monde est le plus grand des espaces dans l'échelle des territoires.

Medium | 18/22pt

LE MONDE EST L'ESPACE HABITÉ ET CONNEXES SOCIÉTÉS. Le mot renvoie à l'appropriation collective d'un espace dédié par une société, sa représentation renvoie à l'évolution des techniques de mesure. Le monde est le plus grand des espaces dans l'échelle des territoires.

Bold | 18/22pt

LE MONDE EST L'ESPACE HABITÉ ET CONNEXES SOCIÉTÉS. Le mot renvoie à l'appropriation collective d'un espace dédié par une société, sa représentation renvoie à l'évolution des techniques de mesure. Le monde est le plus grand des espaces dans l'échelle des territoires.

Light Italic | 18/22pt

LE MONDE EST L'ESPACE HABITÉ ET CONNEXES SOCIÉTÉS. Le mot renvoie à l'appropriation collective d'un espace dédié par une société, sa représentation renvoie à l'évolution des techniques de mesure. Le monde est le plus grand des espaces dans l'échelle des territoires.

Light Cursive | 18/22pt

LE MONDE EST L'ESPACE HABITÉ ET CONNEXES SOCIÉTÉS. Le mot renvoie à l'appropriation collective d'un espace dédié par une société, sa représentation renvoie à l'évolution des techniques de mesure. Le monde est le plus grand des espaces dans l'échelle des territoires.

Regular Italic | 18/22pt

LE MONDE EST L'ESPACE HABITÉ ET CONNEXES SOCIÉTÉS. Le mot renvoie à l'appropriation collective d'un espace dédié par une société, sa représentation renvoie à l'évolution des techniques de mesure. Le monde est le plus grand des espaces dans l'échelle des territoires.

Regular Cursive | 18/22pt

LE MONDE EST L'ESPACE HABITÉ ET CONNEXES SOCIÉTÉS. Le mot renvoie à l'appropriation collective d'un espace dédié par une société, sa représentation renvoie à l'évolution des techniques de mesure. Le monde est le plus grand des espaces dans l'échelle des territoires.

- 2 Family Overview
- 3 Design Information
- 4 **Latin**
- 4 **Jigsaw**
- 9 Jigsaw Stencil
- 12 Character Set
- 13 OpenType Features
- 16 Credits & Information

Rent

Buy Jigsaw

In its most general sense, the term 'world' refers to the totality of entities, to the whole of reality or to everything that is. The nature of the world has been conceptualized differently in different fields. Some conceptions see the world as unique while others talk of a 'plurality of worlds'. Some treat the world as one simple object while others analyze the world as a complex made up of many parts. In scientific cos

Light & Light Italic | 12/14pt

In its most general sense, the term 'world' refers to the totality of entities, to the whole of reality or to everything that is. The nature of the world has been conceptualized differently in different fields. Some conceptions see the world as unique while others talk of a 'plurality of worlds'. Some treat the world as one simple object while others analyze the world as a complex made

Light Italic & Light Cursive | 12/14pt

In its most general sense, the term 'world' refers to the totality of entities, to the whole of reality or to everything that is. The nature of the world has been conceptualized differently in different fields. Some conceptions see the world as unique while others talk of a 'plurality of worlds'. Some treat the world as one simple object while others analyze the world as a complex made

Light Cursive & Regular Italic | 12/14pt

In its most general sense, the term 'world' refers to the totality of entities, to the whole of reality or to everything that is. The nature of the world has been conceptualized differently in different fields. Some conceptions see the world as unique while others talk of a 'plurality of worlds'. Some treat the world as one simple object while others analyze the world as a complex made up of many parts. In scientific cos

Regular & Regular Cursive | 12/14pt

In its most general sense, the term 'world' refers to the totality of entities, to the whole of reality or to everything that is. The nature of the world has been conceptualized differently in different fields. Some conceptions see the world as unique while others talk of a 'plurality of worlds'. Some treat the world as one simple object while others analyze the world as a complex made up of many parts. In scientific cos

Regular Italic & Medium Cursive | 12/14pt

In its most general sense, the term 'world' refers to the totality of entities, to the whole of reality or to everything that is. The nature of the world has been conceptualized differently in different fields. Some conceptions see the world as unique while others talk of a 'plurality of worlds'. Some treat the world as one simple object while others analyze the world as a complex made up of many parts. In scientific cos

Regular Cursive & Medium Italic | 12/14pt

In its most general sense, the term 'world' refers to the totality of entities, to the whole of reality or to everything that is. The nature of the world has been conceptualized differently in different fields. Some conceptions see the world as unique while others talk of a 'plurality of worlds'. Some treat the world as one simple object while others analyze the world as a complex made up of many parts. In scientific cos

Medium Cursive & Bold Italic | 12/14pt

In its most general sense, the term 'world' refers to the totality of entities, to the whole of reality or to everything that is. The nature of the world has been conceptualized differently in different fields. Some conceptions see the world as unique while others talk of a 'plurality of worlds'. Some treat the world as one simple object while others analyze the world as a complex made up of many parts. In scientific cos

Medium & Bold Cursive | 12/14pt

In its most general sense, the term 'world' refers to the totality of entities, to the whole of reality or to everything that is. The nature of the world has been conceptualized differently in different fields. Some conceptions see the world as unique while others talk of a 'plurality of worlds'. Some treat the world as one simple object while others analyze the world as a complex made up of many parts. In scientific cos

Medium Italic & Light Italic | 12/14pt

In its most general sense, the term 'world' refers to the totality of entities, to the whole of reality or to everything that is. The nature of the world has been conceptualized differently in different fields. Some conceptions see the world as unique while others talk of a 'plurality of worlds'. Some treat the world as one simple object while others analyze the world as a complex made up of many parts. In scientific cos

Bold & Light Cursive | 12/14pt

In its most general sense, the term 'world' refers to the totality of entities, to the whole of reality or to everything that is. The nature of the world has been conceptualized differently in different fields. Some conceptions see the world as unique while others talk of a 'plurality of worlds'. Some treat the world as one simple object while others analyze the world as a complex made up of many parts. In scientific cos

Bold Italic & Regular Italic | 12/14pt

In its most general sense, the term 'world' refers to the totality of entities, to the whole of reality or to everything that is. The nature of the world has been conceptualized differently in different fields. Some conceptions see the world as unique while others talk of a 'plurality of worlds'. Some treat the world as one simple object while others analyze the world as a complex made up of many parts. In scientific cos

Bold Cursive & Regular Cursive | 12/14pt

- 2 Family Overview
- 3 Design Information
- 4 Latin
- 4 Jigsaw
- 9 Jigsaw Stencil
- 12 Character Set
- 13 OpenType Features
- 16 Credits & Information

Rent

Buy Jigsaw

In its most general sense, the term 'world' **the totality of entities, to the whole of reality or to everything that is.** The nature of the world has been conceptualized differently in different fields. Some conceptions see the world as unique while others talk of a 'plurality of worlds'. Some treat the world as one simple object while others analyze the world as a complex made up of many parts. In scientific cosmology the world or universe is commonly defined as the totality of all space and time; all that is, has been, and will be. Theories of modality, on the other hand, talk of possible worlds as complete and consistent ways how things could have been. Phenomenology, starting from the horizon of co-given objects present in the periphery of every experience, defines the world as the biggest horizon or the 'horizon of all horizons'. In philosophy of mind, the world is commonly contrasted with the mind as that which is represented by the mind. Theology conceptualizes the world in relation to God, for example, as God's creation, as identical to God or as the two being interdependent. In religions, there is often a tendency to downgrade the material or sensory world in favor of a spiritual world to be sought through religious practice. A comprehensive representation of the world and our place in it, as is commonly found in religions, is known as a worldview. Cosmogony is the field that studies the origin or creation of the world while eschatology refers to the science or doctrine of the last things or of the end of the world.

In its most general sense, the term 'world' **to the totality of entities, to the whole of reality or to everything that is.** The nature of the world has been conceptualized differently in different fields. Some conceptions see the world as unique while others talk of a 'plurality of worlds'. Some treat the world as one simple object while others analyze the world as a complex made up of many parts. In scientific cosmology the world or universe is commonly defined as the totality of all space and time; all that is, has been, and will be. Theories of modality, on the other hand, talk of possible worlds as complete and consistent ways how things could have been. Phenomenology, starting from the horizon of co-given objects present in the periphery of every experience, defines the world as the biggest horizon or the 'horizon of all horizons'. In philosophy of mind, the world is commonly contrasted with the mind as that which is represented by the mind. Theology conceptualizes the world in relation to God, for example, as God's creation, as identical to God or as the two being interdependent. In religions, there is often a tendency to downgrade the material or sensory world to be sought through religious practice. A comprehensive representation of the world and our place in it, as is commonly found in religions, is known as a worldview. Cosmogony is the field that studies the origin or creation of the world while eschatology refers to the science or doctrine of the last things or of the end of the world.

In its most general sense, the term 'world' **reality or to everything that is. The nature of the world has been conceptualized differently in different fields. Some conceptions see the world as unique while others talk of a 'plurality of worlds'. Some treat the world as one simple object while others analyze the world as a complex made up of many parts. In scientific cosmology the world or universe is commonly defined as the totality of all space and time; all that is, has been, and will be. Theories of modality, on the other hand, talk of possible worlds as complete and consistent ways how things could have been. Phenomenology, starting from the horizon of co-given objects present in the periphery of every experience, defines the world as the biggest horizon or the 'horizon of all horizons'. In philosophy of mind, the world is commonly contrasted with the mind as that which is represented by the mind. Theology conceptualizes the world in relation to God, for example, as God's creation, as identical to God or as the two being interdependent. In religions, there is often a tendency to downgrade the material or sensory world in favor of a spiritual world to be sought through religious practice. A comprehensive representation of the world and our place in it, as is commonly found in religions, is known as a worldview. Cosmogony is the field that studies the origin or creation of the world while eschatology refers to the science or doctrine of the last things or of the end of the world.**

- 2 Family Overview
- 3 Design Information
- 4 **Latin**
- 4 Jigsaw
- 9 Jigsaw Stencil
- 12 Character Set
- 13 OpenType Features
- 16 Credits & Information

[Rent](#)[Buy Jigsaw Stencil](#)

Amsterdam

Light | 38pt

Copenhagen

Light Cursive | 38pt

Edinburgh

Regular Italic | 38pt

Guangzhou

Medium Cursive | 38pt

Istanbul

Medium Italic | 38pt

Kathmandu

Bold Italic | 38pt

Bengaluru

Light Italic | 38pt

Damascus

Regular | 38pt

Fortaleza

Regular Cursive | 38pt

Hong Kong

Medium | 38pt

Jerusalem

Bold | 38pt

Luxembourg

Bold Cursive | 38pt

En su sentido más general, la palabra 'mundo' se re

Light | 32pt

En su sentido más general, la palabra 'mundo' se r

Regular | 32pt

En su sentido más general, la palabra 'mundo' se

Medium | 32pt

En su sentido más general, la palabra 'mundo' s

Bold | 32pt

Die Einschätzung, was zu diesem Begriff im Einzelne

Light Italic | 32pt

Die Einschätzung, was zu diesem Begriff im Einzelnen

Light Cursive | 32pt

Die Einschätzung, was zu diesem Begriff im Einzel

Regular Italic | 32pt

Die Einschätzung, was zu diesem Begriff im Einzelne

Regular Cursive | 32pt

Die Einschätzung, was zu diesem Begriff im Einze

Medium Cursive | 32pt

Die Einschätzung, was zu diesem Begriff im Einze

Medium Italic | 32pt

Die Einschätzung, was zu diesem Begriff im Ein

EN SU SENTIDO MÁS GENERAL, LA PALA
totalidad de entidades, al conjunto de la real
lo que fue, es y será. La naturaleza del mundo se
conceptualizado de diferentes maneras en di
ámbitos. Algunas concepciones ven el mundo

Light | 18/22pt

EN SU SENTIDO MÁS GENERAL, LA PALA
la totalidad de entidades, al conjunto de la
todo lo que fue, es y será. La naturaleza del
conceptualizado de diferentes maneras en c
ámbitos. Algunas concepciones ven el munc

Regular | 18/22pt

EN SU SENTIDO MÁS GENERAL, LA PALA
a la totalidad de entidades, al conjunto de
a todo lo que fue, es y será. La naturaleza c
ha conceptualizado de diferentes maneras
ámbitos. Algunas concepciones ven el mur

Medium | 18/22pt

EN SU SENTIDO MÁS GENERAL, LA PA
refiere a la totalidad de entidades, al conj
realidad o a todo lo que fue, es y será. La
del mundo se ha conceptualizado de dife
maneras en distintos ámbitos. Algunas co

Bold | 18/22pt

EN SU SENTIDO MÁS GENERAL, LA PALAB
totalidad de entidades, al conjunto de la reali
que fue, es y será. La naturaleza del mundo se
conceptualizado de diferentes maneras en dis
ámbitos. Algunas concepciones ven el mundo

Light Italic | 18/22pt

EN SU SENTIDO MÁS GENERAL, LA PALAB
totalidad de entidades, al conjunto de la realid
que fue, es y será. La naturaleza del mundo se h
conceptualizado de diferentes maneras en disti
Algunas concepciones ven el mundo como algo.

Light Cursive | 18/22pt

EN SU SENTIDO MÁS GENERAL, LA PALA
la totalidad de entidades, al conjunto de la r
todo lo que fue, es y será. La naturaleza del
conceptualizado de diferentes maneras en d
ámbitos. Algunas concepciones ven el mund

Regular Italic | 18/22pt

EN SU SENTIDO MÁS GENERAL, LA PALA
la totalidad de entidades, al conjunto de la re
todo lo que fue, es y será. La naturaleza del m
conceptualizado de diferentes maneras en dis
ámbitos. Algunas concepciones ven el mundo

Regular Cursive | 18/22pt

EN SU SENTIDO MÁS GENERAL, LA PAL
a la totalidad de entidades, al conjunto de l
todo lo que fue, es y será. La naturaleza del

- 2 Family Overview
- 3 Design Information
- 4 Latin
- 4 Jigsaw
- 9 Jigsaw Stencil
- 12 **Character Set**
- 13 OpenType Features
- 16 Credits & Information

Character Set

A	B	C	D	E	F	G	H	I	J	K	L	M	N	O	P	Q	R	S	T	U	V	W	X	Y	Z	a	b	c	d
e	f	g	h	i	j	k	l	m	n	o	p	q	r	s	t	u	v	w	x	y	z	À	Á	Â	Ã	Ä	Å	Æ	Ả
Ą	Æ	Ĳ	Ĳ	Ć	Ĉ	Č	Č	Ç	Đ	Đ	Đ	È	É	Ê	Ë	Ê	Ë	Ê	Ë	Ê	Ë	Ę	Ě	Ĝ	Ğ	Ġ	Ĥ	Ħ	
Ì	Í	Î	Ī	Ī	Ĭ	Ĭ	Ĭ	Ĵ	Ĵ	Ĵ	Ĵ	Ĵ	Ĵ	Ĵ	Ĵ	Ĵ	Ĵ	Ĵ	Ĵ	Ĵ	Ĵ	Ĵ	Ĵ	Ĵ	Ĵ	Ĵ	Ĵ	Ĵ	
Ō	Ō	Ö	Ö	Ø	Ø	Œ	Œ	Œ	Œ	Š	Š	Š	Š	Š	Š	Š	Š	Š	Š	Š	Š	Š	Š	Š	Š	Š	Š	Š	
Ü	Ü	Ů	Ů	Ů	Ů	Ů	Ů	Ů	Ů	Ů	Ů	Ů	Ů	Ů	Ů	Ů	Ů	Ů	Ů	Ů	Ů	Ů	Ů	Ů	Ů	Ů	Ů	Ů	
æ	æ	ć	ć	ć	ć	ç	d'	đ	đ	ð	è	é	ê	ë	ē	ě	è	ë	ě	ẹ	f	ğ	ğ	ğ	ğ	ĥ	h	ì	í
î	ĩ	ī	ĩ	i	ï	j	ı	ij	íj	í	ĵ	j	ķ	ĺ	ĺ	ĵ	ł	ł	ń	ñ	ñ	ñ	ņ	ņ	ņ	ň	ò	ó	ô
õ	õ	ö	ö	ø	ø	œ	þ	ř	ř	ř	ś	ś	ś	ś	ş	ş	ş	ß	ţ	ţ	ţ	ţ	ţ	ţ	ù	ú	û	ü	
ũ	ü	ű	ű	ű	ų	ṽ	w̃	w̃	w̃	w̃	x̃	ỳ	ý	ÿ	ÿ	ÿ	z	z	ž	ƚ	fi	`	`	`	`	^	~	-	-
˘	˘	˙	˙	˚	˚	˛	˜	,	,	,	,	:	;	?	¿	!	¡	-	-	-	-	-	@	&	/	\	
	()	[]	{	}	^	~	°	§	•	¶	#	%	‰	†	‡	'	"	"	"	"	"	"	"	"	"	"	
*	·	+	<	=	>	!	¬	±	μ	×	÷	Ω	∂	Δ	Π	Σ	−	√	∞	∫	≈	≠	≤	≥	◊	½	⅓	¼	
¾	⅛	⅜	⅝	⅞	/	©	ª	®	º	ℓ	№	©	SM	TM	e	\$	¢	£	¤	¥	₣	₵	₶	₷	₸	₹	₺	₻	
₩	₩	₩	₩	₩	₩	₩	₩	₩	₩	₩	₩	₩	₩	₩	₩	₩	₩	₩	₩	₩	₩	₩	₩	₩	₩	₩	₩	₩	
9	®	№	\$	£	¥	f	€	o	ø	1	2	3	4	5	6	7	8	9	0	0	1	2	3	4	5	6	7	8	
o	ø	1	2	3	4	5	6	7	8	9	˘	˘	˘	˘	˘	˘	˘	˘	˘	˘	˘	˘	˘	˘	˘	˘	˘	˘	
>	<	«	»	0	1	2	3	4	5	6	7	8	9	,	.	()	+	=	-	\$	€	0	1	2	3	4	5	
7	8	9	,	.	()	+	=	-	\$	€	0	1	2	3	4	5	6	7	8	9	0	1	2	3	4	5	6	
8	9	ffi	—	ffj	■																								

OpenType Features

OPENTYPE LAYOUT FEATURES

Case Sensitive Forms (case)

When the 'change to caps' function is applied from within an application (not when text is typed in caps) appropriate case-sensitive forms are automatically applied. Regular brackets, parenthesis, dashes and hyphens are replaced with their capital forms.

¡¿AB?! (C-D) ▶ ¡¿AB?! (C-D)

Circled numerals and arrows (dlig)

The discretionary ligature feature creates real arrows when you type the combination -> (right arrow), <- (left arrow), ^- (up arrow) or ^- (down arrow). It also creates enclosed numerals when you type numerals inside parenthesis, and inverse enclosed numerals when you type numerals inside brackets. Discretionary ligatures are off by default in Adobe applications.

(1) (2) [3] -> -^ ^- ▶ (1) (2) [3] → ↑ ↓
(C) (R) (U) (P) ▶ © ® (U) ®

Standard Ligatures (liga)

Standard ligatures are those which are designed to improve the readability of certain letter pairs. For example, when this feature is activated, typing 'f' and 'i' will automatically produce the 'fi' ligature. Using ligatures does not affect the spelling and hyphenation of your text in any way.

final ▶ final

Proportional Lining Figures (lnum, pnum)

Typotheque fonts contain various styles of numerals within one font. Old-style Figures, also known as ranging figures, come standard in our text fonts. They are specifically designed to work well in running text, as they have the same proportions as lower case letters with their ascenders and descenders. The proportional Lining Figures feature changes standard figures to Lining figures which work better with all-capital text.

o12345\$€ ▶ 012345\$€

OpenType Features

OPENTYPE LAYOUT FEATURES

Tabular Lining Figures (lnum, tnum)

Tabular figures are for use in tables where numerals need to be aligned vertically. Tabular figures are available as an OpenType feature and have a fixed width in all weights. Typotheque fonts include both Lining and Old-style Tabular figures.

012345\$€ ▶ 012345\$€

Tabular Old-style Figures (onum, tnum)

Tabular figures are for use in tables where numerals need to be aligned vertically. Tabular figures are available as an OpenType feature and have a fixed width in all weights. Typotheque fonts include both Lining and Old-style Tabular figures.

012345\$€ ▶ 012345\$€

Slashed Zero (zero)

To avoid confusion between a zero and a capital O, a slashed zero glyph is available in most Typotheque fonts. It is activated by an OpenType feature.

012345 ▶ 0̸12345

Arbitrary Fractions (frac)

Typotheque OpenType fonts already include a number of pre-designed diagonal fractions. The fraction feature allows you to create other fractions quickly and easily.

2 1/2 3 1/10 4 12/50 ▶ 2¹/2 3¹/10 4¹²/50

Superiors (sups)

Replaces all styles of figures (old style, tabular, lining) and letters with their superior alternates, which can be used for footnotes, formulas, etc. Superior characters are more legible than mathematically scaled characters, have a similar stroke weight, are spaced more generously, and better complement the rest of the text.

NOTE₁₂ ▶ NOTE¹²

- 2 Family Overview
- 3 Design Information
- 4 Latin
- 13 OpenType Features
- 16 Credits & Information

OpenType Features

OPENTYPE LAYOUT FEATURES

Inferiors (sinf) or (subs)

Replaces all styles of figures (old style, tabular, lining) and letters with their inferior alternates, used primarily for mathematical or chemical notation. Inferior characters are more legible than mathematically scaled characters, have a similar stroke weight, are spaced more generously, and better complement the rest of the text

C6H5OH ▶ C₆H₅OH

- 2 Family Overview
- 3 Design Information
- 4 Latin
- 13 OpenType Features
- 16 Credits & Information

[Johanna Bilak](#) (Latin)

6.001 – 2024

OpenType CFF (OTF)
Web Open Font Format (WOFF)
Web Open Font Format 2.0 (WOFF2)
Variable Font (TTF)

Learn about which license suits your needs best by visiting <https://www.typosetheque.com/>

2002

21st International Biennale of Graphic Design

For questions concerning font licensing,
pricing, technical questions and for general
enquiries please write to:
info@typosetheque.com

Typosetheque © 1999 – 2024
All Rights Reserved

TYPOTHEQUE
Koningsplein 12
2518 JE The Hague
Netherlands
Phone: +31 70 322 6119
www.typosetheque.com

Instagram: [@typosetheque](#)
Twitter: [@typosetheque](#)
Vimeo: [@typosetheque](#)