

Delvard Serif

Delvard Serif Text is a quirky art nouveau-inspired typeface in three optical sizes, ranging in width and contrast between the thick and thin strokes. It has very high x-height and distinctive design features optimised for very small text sizes.

AVAILABLE IN

Latin

MORE

Rent

Buy Delvard Serif

- 2 Family Overview
- 3 Design Information
- 4 Latin
- 17 OpenType Features
- 20 Credits & Information

Type Family Overview

STYLES

Delvard Serif Text comes in 24 styles, available as static font files or Variable Font families.

Delvard Serif Text

Regular *Italic*
Medium *Italic*
Semibold *Italic*
Bold *Italic*

Delvard Serif Subhead

Regular *Italic*
Medium *Italic*
Semibold *Italic*
Bold *Italic*

Delvard Serif Display

Regular *Italic*
Medium *Italic*
Semibold *Italic*
Bold *Italic*

RELATED FONTS

Delvard Sans
[↗ Web](#)

Delvard Sans Condensed
[↗ Web](#)

Delvard Display
[↗ Web](#)

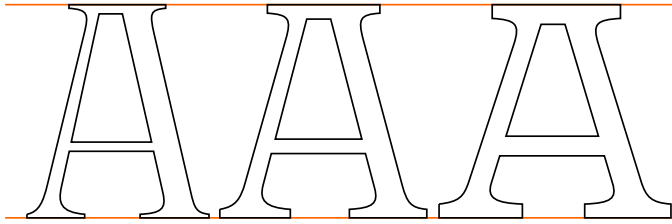
DELVARD GRADIENT
[↗ Web](#)

- 2 Family Overview
- 3 Design Information
- 4 Latin
- 17 OpenType Features
- 20 Credits & Information

Design Information

Design Concept

Delvard Serif is not modelled on a single historical source, but takes loose inspiration from the late 19th-century art nouveau posters and their adventurous lettering. Delvard Serif has a high x-height, and distinctive design features such as flat curves with abrupt terminals and deep cuts of the 'g' and the 'f' that give the text spark.



Optical Sizes

The Text version is generous in width, with vertical and horizontal proportions of the types made for the micro sizes (5–7pt), and thanks to its robustness and spaciousness, it is highly legible in small text. The Subhead styles have regular proportions for small to medium text sizes (8–17pt), and increase the contrast slightly. And finally, there is the crisp and eye-catching Display styles, with narrow widths and pronounced, eccentric detailing for high-impact headlines of about 18pt.

Delvard Serif Display (> 18pt)

Delvard Serif Subhead (8–17pt)

Delvard Serif Text (5–7pt)



Numeral Styles

Each weight of Delvard Serif includes nine different kinds of numerals. Proportional old-style figures come as default figures in Delvard Serif. It also, however, includes lining figures, tabular numerals (both lining and old-style), small caps numerals, superior, inferior, circled and circled inverted numerals. For the running text, old-style figures work best; for capital setting, use lining figures; and with small caps, choose the specially designed Small Caps numerals applicable via OpenType layout features. When you take a licence of this font, you can choose the default numeral variants inside the fonts.

I CAPITALS 12345

I lower case 12345

I SMALL CAPS 12345

DELVARD SERIF

- 2 Family Overview
- 3 Design Information
- 4 Latin
- 4 **Delvard Serif Text**
- 9 Delvard Serif Subhead
- 12 Delvard Serif Display
- 15 Character Set
- 17 OpenType Features
- 20 Credits & Information

MORE

Rent

Buy Delvard Serif Text

Amsterdam

Regular | 44pt

Bengaluru

Regular Italic | 44pt

Copenhagen

Medium | 44pt

Damascus

Medium Italic | 44pt

Edinburgh

Semibold | 44pt

Fortaleza

Semibold Italic | 44pt

Guangzhou

Bold | 44pt

Hong Kong

Bold Italic | 44pt

DELVARD SERIF

- 2 Family Overview
- 3 Design Information
- 4 Latin
- 4 Delvard Serif Text
- 9 Delvard Serif Subhead
- 12 Delvard Serif Display
- 15 Character Set
- 17 OpenType Features
- 20 Credits & Information

MORE

Rent

Buy Delvard Serif Text

Le Monde est l'espace habité et connu par

Regular | 30pt

Le Monde est l'espace habité et connu par

Medium | 30pt

Le Monde est l'espace habité et connu par

Semibold | 30pt

Le Monde est l'espace habité et connu par

Bold | 30pt

En su sentido más general, la palabra 'mundo'

Regular Italic | 30pt

En su sentido más general, la palabra 'mundo'

Medium Italic | 30pt

En su sentido más general, la palabra 'mundo'

Semibold Italic | 30pt

En su sentido más general, la palabra 'mundo'

Bold Italic | 30pt

DELVARD SERIF

- 2 Family Overview
- 3 Design Information
- 4 Latin
- 4 Delvard Serif Text
- 9 Delvard Serif Subhead
- 12 Delvard Serif Display
- 15 Character Set
- 17 OpenType Features
- 20 Credits & Information

MORE

Rent

Buy Delvard Serif Text

LE MONDE EST L'ESPACE HABITÉ ET CC différentes sociétés. Le mot renvoie à l'appropriation collective d'un espace d'une société, sa représentation renvoie à l'évolution des techniques de mesure. Le monde est le

Regular | 16/21pt

LE MONDE EST L'ESPACE HABITÉ ET CC différentes sociétés. Le mot renvoie à l'appropriation collective d'un espace d'une société, sa représentation renvoie à l'évolution des techniques de mesure.

Medium | 16/21pt

LE MONDE EST L'ESPACE HABITÉ ET CC différentes sociétés. Le mot renvoie à l'appropriation collective d'un espace d'une société, sa représentation renvoie à l'évolution des techniques de mesure.

Semibold | 16/21pt

LE MONDE EST L'ESPACE HABITÉ ET CC différentes sociétés. Le mot renvoie à l'appropriation collective d'un espace d'une société, sa représentation renvoie à l'évolution des techniques de mesure.

Bold | 16/21pt

LE MONDE EST L'ESPACE HABITÉ ET CC différentes sociétés. Le mot renvoie à l'appropriation collective d'un espace dédié par une société, sa représentation renvoie à l'évolution des techniques de mesure. Le monde est le plus grand des espaces dans l'échelle des te

Regular Italic | 16/21pt

LE MONDE EST L'ESPACE HABITÉ ET CC différentes sociétés. Le mot renvoie à l'appropriation collective d'un espace dédié par une société, sa représentation renvoie à l'évolution des techniques de mesure. Le monde est le plus grand des es

Medium Italic | 16/21pt

LE MONDE EST L'ESPACE HABITÉ ET CC différentes sociétés. Le mot renvoie à l'appropriation collective d'un espace dédié par une société, sa représentation renvoie à l'évolution des techniques de mesure. Le monde est le plus grand des es

Semibold Italic | 16/21pt

LE MONDE EST L'ESPACE HABITÉ ET CC différentes sociétés. Le mot renvoie à l'appropriation collective d'un espace dédié par une société, sa représentation renvoie à l'évolution des techniques de mesure. Le monde est le plus grand de

Bold Italic | 16/21pt

- 2 Family Overview
- 3 Design Information
- 4 Latin
- 4 Delvard Serif Text
- 9 Delvard Serif Subhead
- 12 Delvard Serif Display
- 15 Character Set
- 17 OpenType Features
- 20 Credits & Information

Rent

Buy Delvard Serif Text

In its most general sense, the term 'world' refers to the totality of entities, to the whole of reality or to everything that is. The nature of the world has been conceptualized differently in different fields. Some conceptions see the world as unique while others talk of a 'plurality of worlds'. Some treat the world as one simple object while others analyze

Regular & Regular Italic | 13/17pt

In its most general sense, the term 'world' refers to the totality of entities, to the whole of reality or to everything that is. The nature of the world has been conceptualized differently in different fields. Some conceptions see the world as unique while others talk of a 'plurality of worlds'. Some treat the world as one simple object while others analyze

Medium Italic & Bold Italic | 13/17pt

In its most general sense, the term 'world' refers to the totality of entities, to the whole of reality or to everything that is. The nature of the world has been conceptualized differently in different fields. Some conceptions see the world as unique while others talk of a 'plurality of worlds'. Some treat the world as one simple object while others analyze

Bold & Semibold Italic | 13/17pt

In its most general sense, the term 'world' refers to the totality of entities, to the whole of reality or to everything that is. The nature of the world has been conceptualized differently in different fields. Some conceptions see the world as unique while others talk of a 'plurality of worlds'. Some treat the world as one simple object while others analyze

Regular Italic & Medium Italic | 13/17pt

In its most general sense, the term 'world' refers to the totality of entities, to the whole of reality or to everything that is. The nature of the world has been conceptualized differently in different fields. Some conceptions see the world as unique while others talk of a 'plurality of worlds'. Some treat the world as one simple object while others analyze

In its most general sense, the term 'world' refers to the totality of entities, to the whole of reality or to everything that is. The nature of the world has been conceptualized differently in different fields. Some conceptions see the world as unique while others talk of a 'plurality of worlds'. Some treat the world as one simple object while others analyze

Semibold & Regular Italic | 13/17pt

In its most general sense, the term 'world' refers to the totality of entities, to the whole of reality or to everything that is. The nature of the world has been conceptualized differently in different fields. Some conceptions see the world as unique while others talk of a 'plurality of worlds'. Some treat the world as one simple object while others analyze

Medium & Semibold Italic | 13/17pt

In its most general sense, the term 'world' refers to the totality of entities, to the whole of reality or to everything that is. The nature of the world has been conceptualized differently in different fields. Some conceptions see the world as unique while others talk of a 'plurality of worlds'. Some treat the world as one simple object while others analyze

Semibold Italic & Medium Italic | 13/17pt

In its most general sense, the term 'world' refers to the totality of entities, to the whole of reality or to everything that is. The nature of the world has been conceptualized differently in different fields. Some conceptions see the world as unique while others talk of a 'plurality of worlds'. Some treat the world as one simple object while others analyze

Bold Italic | 13/17pt

In its most general sense, the term 'world' refers to the totality of existence, to the whole of reality or to everything that is. The nature of the world has been conceptualized differently in different fields. Some conceptions see the world as unique while others talk of a 'plurality of worlds'. Some treat the world as one simple object while others analyze the world as a complex made up of many parts. In scientific cosmology the world or universe is commonly defined as 'the totality of all space and time; all that has been, and will be'. Theories of modality, on the other hand, talk of possible worlds as complete and consistent ways how things could have been. Phenomenology, starting from the horizon of co-given objects present in the periphery of every experience, defines the world as the biggest horizon or the 'horizon of all horizons'. In philosophy of mind, the world is commonly contrasted with the mind that which is represented by the mind. Theology conceptualizes the world in relation to God, for example, as God's creation, as identical to God or as the two being interdependent. In religions, there is often a tendency to do

In its most general sense, the term 'world' refers to the totality of existence, to the whole of reality or to everything that is. The nature of the world has been conceptualized differently in different fields. Some conceptions see the world as unique while others talk of a 'plurality of worlds'. Some treat the world as one simple object while others analyze the world as a complex made up of many parts. In scientific cosmology the world or universe is commonly defined as 'the totality of all space and time; all that is, has been, and will be'. Theories of modality, on the other hand, talk of possible worlds as complete and consistent ways how things could have been. Phenomenology, starting from the horizon of co-given objects present in the periphery of every experience, defines the world as the biggest horizon or the 'horizon of all horizons'. In philosophy of mind, the world is commonly contrasted with the mind as that which is represented by the mind. Theology conceptualizes the world in relation to God, for example, as God's creation, as identical to God or as the two being interdependent. In religions, there is o

In its most general sense, the term 'world' refers to the totality of existence, to the whole of reality or to everything that is. The nature of the world has been conceptualized differently in different fields. Some conceptions see the world as unique while others talk of a 'plurality of worlds'. Some treat the world as one simple object while others analyze the world as a complex made up of many parts. In scientific cosmology the world or universe is commonly defined as 'the totality of all space and time; all that is, has been, and will be'. Theories of modality, on the other hand, talk of possible worlds as complete and consistent ways how things could have been. Phenomenology, starting from the horizon of co-given objects present in the periphery of every experience, defines the world as the biggest horizon or the 'horizon of all horizons'. In philosophy of mind, the world is commonly contrasted with the mind as that which is represented by the mind. Theology conceptualizes the world in relation to God, for example, as God's creation, as identical to God or as the two being interdependent. In religions, there is o

- 2 Family Overview
- 3 Design Information
- 4 **Latin**
- 4 Delvard Serif Text
- 9 **Delvard Serif Subhead**
- 12 Delvard Serif Display
- 15 Character Set
- 17 OpenType Features
- 20 Credits & Information

Rent

Buy Delvard Serif Subhead

Amsterdam

Regular | 44pt

Copenhagen

Medium | 44pt

Edinburgh

Semibold | 44pt

Guangzhou

Bold | 44pt

Bengaluru

Regular Italic | 44pt

Damascus

Medium Italic | 44pt

Fortaleza

Semibold Italic | 44pt

Hong Kong

Bold Italic | 44pt

DELVARD SERIF

- 2 Family Overview
- 3 Design Information
- 4 **Latin**
- 4 Delvard Serif Text
- 9 **Delvard Serif Subhead**
- 12 Delvard Serif Display
- 15 Character Set
- 17 OpenType Features
- 20 Credits & Information

MORE

Rent

Buy Delvard Serif Subhead

En su sentido más general, la palabra 'mundo'

Regular | 30pt

En su sentido más general, la palabra 'mundo'

Medium | 30pt

En su sentido más general, la palabra 'mundo'

Semibold | 30pt

En su sentido más general, la palabra 'mund'

Bold | 30pt

Con il sostantivo mondo si usa designare la totali

Regular Italic | 30pt

Con il sostantivo mondo si usa designare la total

Medium Italic | 30pt

Con il sostantivo mondo si usa designare la tota

Semibold Italic | 30pt

Con il sostantivo mondo si usa designare la tota

Bold Italic | 30pt

DELVARD SERIF

- 2 Family Overview
- 3 Design Information
- 4 Latin
- 4 Delvard Serif Text
- 9 Delvard Serif Subhead
- 12 Delvard Serif Display
- 15 Character Set
- 17 OpenType Features
- 20 Credits & Information

MORE

Rent

Buy Delvard Serif Subhead

LE MONDE EST L'ESPACE HABITÉ ET CONN
sociétés. Le mot renvoie à l'appropriation c
espace dédié par une société, sa représenta
l'évolution des techniques de mesure. Le m
plus grand des espaces dans l'échelle des te

Regular | 16/21pt

LE MONDE EST L'ESPACE HABITÉ ET CONN
différentes sociétés. Le mot renvoie à l'app
collective d'un espace dédié par une sociét
représentation renvoie à l'évolution des te
mesure. Le monde est le plus grand des es

Medium | 16/21pt

LE MONDE EST L'ESPACE HABITÉ ET CONN
différentes sociétés. Le mot renvoie à l'ap
collective d'un espace dédié par une socié
représentation renvoie à l'évolution des t
mesure. Le monde est le plus grand des es

Semibold | 16/21pt

LE MONDE EST L'ESPACE HABITÉ ET CONN
différentes sociétés. Le mot renvoie à l'ap
collective d'un espace dédié par une socié
représentation renvoie à l'évolution des t
mesure. Le monde est le plus grand des e

Bold | 16/21pt

LE MONDE EST L'ESPACE HABITÉ ET CONN
sociétés. Le mot renvoie à l'appropriation colle
espace dédié par une société, sa représentatio
l'évolution des techniques de mesure. Le mond
grand des espaces dans l'échelle des territoires

Regular Italic | 16/21pt

LE MONDE EST L'ESPACE HABITÉ ET CONN
sociétés. Le mot renvoie à l'appropriation coll
espace dédié par une société, sa représentatic
l'évolution des techniques de mesure. Le mon
grand des espaces dans l'échelle des territoire

Medium Italic | 16/21pt

LE MONDE EST L'ESPACE HABITÉ ET CONN
sociétés. Le mot renvoie à l'appropriation coi
espace dédié par une société, sa représentati
l'évolution des techniques de mesure. Le moi
grand des espaces dans l'échelle des territoir

Semibold Italic | 16/21pt

LE MONDE EST L'ESPACE HABITÉ ET CONN
sociétés. Le mot renvoie à l'appropriation co
espace dédié par une société, sa représentat
l'évolution des techniques de mesure. Le mo
grand des espaces dans l'échelle des territoi

Bold Italic | 16/21pt

DELVARD SERIF

- 2 Family Overview
- 3 Design Information
- 4 **Latin**
- 4 Delvard Serif Text
- 9 Delvard Serif Subhead
- 12 **Delvard Serif Display**
- 15 Character Set
- 17 OpenType Features
- 20 Credits & Information

MORE

Rent

Buy Delvard Serif Display

Amsterdam

Regular | 44pt

Copenhagen

Medium | 44pt

Edinburgh

Semibold | 44pt

Guangzhou

Bold | 44pt

Bengaluru

Regular Italic | 44pt

Damascus

Medium Italic | 44pt

Fortaleza

Semibold Italic | 44pt

Hong Kong

Bold Italic | 44pt

DELVARD SERIF

- 2 Family Overview
- 3 Design Information
- 4 **Latin**
- 4 Delvard Serif Text
- 9 Delvard Serif Subhead
- 12 **Delvard Serif Display**
- 15 Character Set
- 17 OpenType Features
- 20 Credits & Information

MORE

Rent

Buy Delvard Serif Display

Le Monde est l'espace habité et connu par les différe

Regular | 30pt

Le Monde est l'espace habité et connu par les différ

Medium | 30pt

Le Monde est l'espace habité et connu par les diffé

Semibold | 30pt

Le Monde est l'espace habité et connu par les diffé

Bold | 30pt

Die Einschätzung, was zu diesem Begriff im Einzelner

Regular Italic | 30pt

Die Einschätzung, was zu diesem Begriff im Einzelne

Medium Italic | 30pt

Die Einschätzung, was zu diesem Begriff im Einzeln

Semibold Italic | 30pt

Die Einschätzung, was zu diesem Begriff im Einzeln

Bold Italic | 30pt

DELVARD SERIF

- 2 Family Overview
- 3 Design Information
- 4 Latin
- 4 Delvard Serif Text
- 9 Delvard Serif Subhead
- 12 Delvard Serif Display
- 15 Character Set
- 17 OpenType Features
- 20 Credits & Information

MORE

Rent

Buy Delvard Serif Display

LE MONDE EST L'ESPACE HABITÉ ET CONNU PAR LES SOCIÉTÉS. Le mot renvoie à l'appropriation collective d'un espace dédié par une société, sa représentation renvoie à l'évolution des techniques de mesure. Le monde est le plus grand des espaces dans l'échelle des territoires connus. L'histoire du monde s'est construite à travers ces

Regular | 16/21pt

LE MONDE EST L'ESPACE HABITÉ ET CONNU PAR LES SOCIÉTÉS. Le mot renvoie à l'appropriation collective d'un espace dédié par une société, sa représentation renvoie à l'évolution des techniques de mesure. Le monde est le plus grand des espaces dans l'échelle des territoires connus. L'histoire du monde s'est construite à travers ces

Medium | 16/21pt

LE MONDE EST L'ESPACE HABITÉ ET CONNU PAR LES SOCIÉTÉS. Le mot renvoie à l'appropriation collective d'un espace dédié par une société, sa représentation renvoie à l'évolution des techniques de mesure. Le monde est le plus grand des espaces dans l'échelle des territoires connus. L'histoire du monde s'est construite à travers ces

Semibold | 16/21pt

LE MONDE EST L'ESPACE HABITÉ ET CONNU PAR LES SOCIÉTÉS. Le mot renvoie à l'appropriation collective d'un espace dédié par une société, sa représentation renvoie à l'évolution des techniques de mesure. Le monde est le plus grand des espaces dans l'échelle des territoires connus. L'histoire du monde s'est construite à travers ces

Bold | 16/21pt

LE MONDE EST L'ESPACE HABITÉ ET CONNU PAR LES SOCIÉTÉS. Le mot renvoie à l'appropriation collective d'un espace dédié par une société, sa représentation renvoie à l'évolution des techniques de mesure. Le monde est le plus grand des espaces dans l'échelle des territoires connus. L'histoire du monde s'est construite à travers ces

Regular Italic | 16/21pt

LE MONDE EST L'ESPACE HABITÉ ET CONNU PAR LES SOCIÉTÉS. Le mot renvoie à l'appropriation collective d'un espace dédié par une société, sa représentation renvoie à l'évolution des techniques de mesure. Le monde est le plus grand des espaces dans l'échelle des territoires connus. L'histoire du monde s'est construite à travers ces

Medium Italic | 16/21pt

LE MONDE EST L'ESPACE HABITÉ ET CONNU PAR LES SOCIÉTÉS. Le mot renvoie à l'appropriation collective d'un espace dédié par une société, sa représentation renvoie à l'évolution des techniques de mesure. Le monde est le plus grand des espaces dans l'échelle des territoires connus. L'histoire du monde s'est construite à travers ces

Semibold Italic | 16/21pt

LE MONDE EST L'ESPACE HABITÉ ET CONNU PAR LES SOCIÉTÉS. Le mot renvoie à l'appropriation collective d'un espace dédié par une société, sa représentation renvoie à l'évolution des techniques de mesure. Le monde est le plus grand des espaces dans l'échelle des territoires connus. L'histoire du monde s'est construite à travers ces

Bold Italic | 16/21pt

DELVARD SERIF

- 2 Family Overview
- 3 Design Information
- 4 **Latin**
- 4 Delvard Serif Text
- 9 Delvard Serif Subhead
- 12 Delvard Serif Display
- 15 **Character Set**
- 17 OpenType Features
- 20 Credits & Information

	()	[]	{	}	°	¶	#	%	'	"	“	”	'	'	*	.	À	\$	€	a	b	c	d	e	f	g	h
i	j	k	l	m	n	o	p	q	r	s	t	u	v	w	x	y	z	0	1	2	3	4	5	6	7	8	9	è	é
,	.	/	()	+	=	×	÷	-	\$	¢	a	b	c	d	e	f	g	h	i	j	k	l	m	n	o	p	q	r
s	t	u	v	w	x	y	z	0	1	2	3	4	5	6	7	8	9	è	é	,	.	/	()	+	=	×	÷	-
\$	¢	0	1	2	3	4	5	6	7	8	9	0	1	2	3	4	5	6	7	8	9	'		ff	ffi	ffl	À	Á	Ā
Â	Ä	À	Ā	Ą	Å	Ã	Ĥ	Ħ	Ŏ	Ó	Ö	Ô	Ö	Õ	Ò	Ō	Ø	Œ	–	fb	ffj	fh	fi	fì	fj	fk	ß	■	

OpenType Features

OPENTYPE LAYOUT FEATURES

Double cross bar 'A/H' (ss01)
Delvard Serif includes a Stylist Set feature that replaces the standard cross bars on the capitals A or H with a double cross bar.

AHAH ▶ AĦAH

Small Caps (smcp)
Most Typotheque fonts implement the Small Caps feature. In Adobe applications you can replace lower case letters with small caps using the keyboard shortcut (⌘ + ⇧ + H), or the OpenType menu.

Small Caps ▶ SMALL CAPS

All Small Capitals (smcp, c2sc)
There are two methods of applying small capitals. The first one replaces only lower case letters with small caps. The second method, All Small Caps, also replaces capital letters with small caps. It also replaces regular quotation marks, exclamation points, question marks, slashes and usually also numerals with small caps variants.

All Small Caps ▶ ALL SMALL CAPS

Case Sensitive Forms (case)
When the 'change to caps' function is applied from within an application (not when text is typed in caps) appropriate case-sensitive forms are automatically applied. Regular brackets, parenthesis, dashes and hyphens are replaced with their capital forms.

i¿AB?! (C-D) ▶ i¿AB?! (C-D)

Circled numerals and arrows (dlig)
The discretionary ligature feature creates real arrows when you type the combination -> (right arrow), <- (left arrow), ^- (up arrow) or ^- (down arrow). It also creates enclosed numerals when you type numerals inside parenthesis, and inverse enclosed numerals when you type numerals inside brackets. Discretionary ligatures are off by default in Adobe applications.

(1) (2) [3] -> -^ ^- ▶ ① ② ③ → ↑ ↓

(C) (R) (U) (P) ▶ © ® ™ ®

OpenType Features

OPENTYPE LAYOUT FEATURES

Standard Ligatures (liga)

Standard ligatures are those which are designed to improve the readability of certain letter pairs. For example, when this feature is activated, typing 'f' and 'i' will automatically produce the 'fi' ligature. Using ligatures does not affect the spelling and hyphenation of your text in any way.

final ▶ final

Proportional Lining Figures (lnum, pnum)

Typotheque fonts contain various styles of numerals within one font. Old-style Figures, also known as ranging figures, come standard in our text fonts. They are specifically designed to work well in running text, as they have the same proportions as lower case letters with their ascenders and descenders. The proportional Lining Figures feature changes standard figures to Lining figures which work better with all-capital text.

012345\$€ ▶ 012345\$€

Tabular Lining Figures (lnum, tnum)

Tabular figures are for use in tables where numerals need to be aligned vertically. Tabular figures are available as a OpenType feature and have a fixed width in all weights. Typotheque fonts include both Lining and Old-style Tabular figures.

012345\$€ ▶ 012345\$€

Tabular Old-style Figures (onum, tnum)

Tabular figures are for use in tables where numerals need to be aligned vertically. Tabular figures are available as a OpenType feature and have a fixed width in all weights. Typotheque fonts include both Lining and Old-style Tabular figures.

012345\$€ ▶ 012345\$€

Slashed Zero (zero)

To avoid confusion between a zero and a capital O, a slashed zero glyph is available in most Typotheque fonts. It is activated by an OpenType feature.

012345 ▶ 0̸12345

- 2 Family Overview
- 3 Design Information
- 4 Latin
- 17 OpenType Features
- 20 Credits & Information

OpenType Features

OPENTYPE LAYOUT FEATURES

Arbitrary Fractions (frac)

Typotheque OpenType fonts already include a number of pre-designed diagonal fractions. The fraction feature allows you to create other fractions quickly and easily.

2 1/2 3 1/10 4 12/50 ▶ **2¹/₂ 3¹/₁₀ 4¹²/₅₀**

Superiors (sup)

Replaces all styles of figures (old style, tabular, lining) and letters with their superior alternates, which can be used for footnotes, formulas, etc. Superior characters are more legible than mathematically scaled characters, have a similar stroke weight, are spaced more generously, and better complement the rest of the text.

NOTE 12 ▶ **NOTE¹²**

Inferiors (sinf) or (subs)

Replaces all styles of figures (old style, tabular, lining) and letters with their inferior alternates, used primarily for mathematical or chemical notation. Inferior characters are more legible than mathematically scaled characters, have a similar stroke weight, are spaced more generously, and better complement the rest of the text

C6H5OH ▶ **C₆H₅OH**

DELVARD SERIF

- 2 Family Overview
- 3 Design Information
- 4 Latin
- 17 OpenType Features
- 20 Credits & Information

DESIGNERS

[Nikola Djurek](#) (Latin)

CONTRIBUTORS

[Igino Marini](#) (Latin)

ENGINEERING

[Roberto Arista](#) (Latin)

CURRENT VERSION

2.005 – 2023

FIRST RELEASED

2022

AVAILABLE FORMATS

OpenType CFF (OTF)
Web Open Font Format (WOFF)
Web Open Font Format 2.0 (WOFF2)
Variable Font (TTF)

END USER LICENSING AGREEMENT (EULA)

Learn about which license suits your needs best by visiting <https://www.typotheque.com/>

CONTACT

For questions concerning font licensing,
pricing, technical questions and for general
enquiries please write to:
info@typotheque.com

Typotheque © 1999 – 2024
All Rights Reserved

TYPOTHEQUE
Koningsplein 12
2518 JE The Hague
Netherlands
Phone: +31 70 322 6119
www.typotheque.com

Instagram: [@typotheque](#)
Twitter: [@typotheque](#)
Vimeo: [@typotheque](#)