



Q-PROJECT

The Q Project is a broad, open-ended typographic play system that enables users to create a nearly infinite number of variations. Inspired by toys like Lego or Meccano, Q invites you to explore its vast creative space and discover not only new solutions, but also new problems.

Q consists of 6 uppercase base fonts and 35 attachments that can be added as individual layers. It also comes with a variable font with a motion axis, as well as three levels of basic forms that can be combined into new shapes. Designed by Peter Bil'ak, published by Typotheque in June 2020.

Q-PROJECT:

- 1/ Q BASE
- 2/ Q SERIF
- 3/ Q SHAPES
- 4/ Q MECHANIC

Q BASE

ABCDE Q BASE THIN

ABCDE Q BASE STENCIL

ABCDE Q BASE DOTS

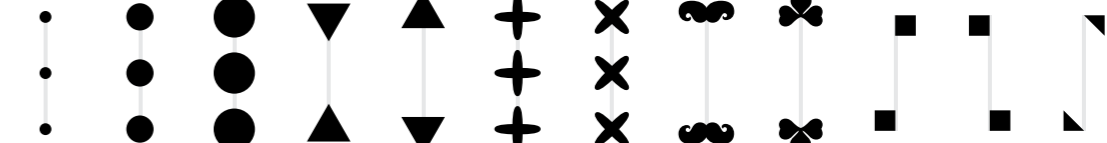
ABCDE Q BASE NORMAL

ABCDE Q BASE SQUARES

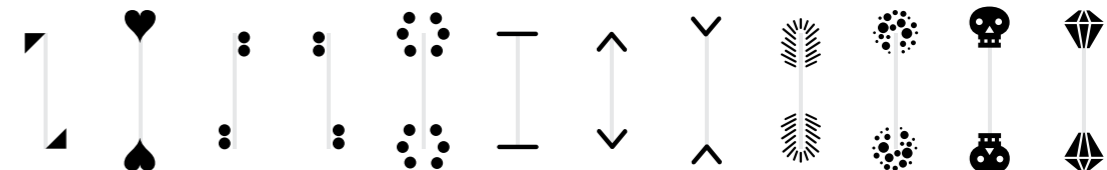
ABCDE Q BASE HEAVY



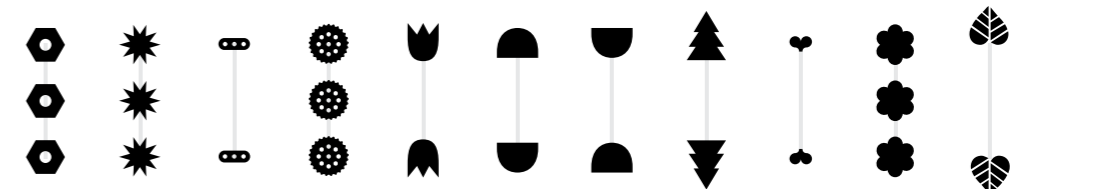
Q SERIF



01 02 03 04 05 06 07 08 09 10 11 12



13 14 15 16 17 18 19 20 21 22 23 24



25 26 27 28 29 30 31 32 33 34 35

Q MECHANIC

ABCDE Q MECHANIC GRAVITY

ABCDE Q MECHANIC NORMAL

ABCDE Q MECHANIC NO GRAVITY

Q SHAPES



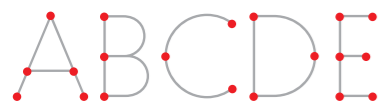
Q SHAPES 01



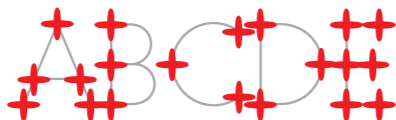
Q SHAPES 02



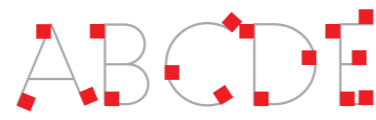
Q SHAPES 03



■ Q BASE THIN + ■ Q SERIF 01



■ Q BASE THIN + ■ Q SERIF 06



■ Q BASE THIN + ■ Q SERIF 11



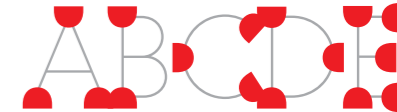
■ Q BASE THIN + ■ Q SERIF 16



■ Q BASE THIN + ■ Q SERIF 21



■ Q BASE THIN + ■ Q SERIF 26



■ Q BASE THIN + ■ Q SERIF 31



■ Q BASE THIN + ■ Q SERIF 02



■ Q BASE THIN + ■ Q SERIF 07



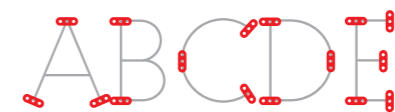
■ Q BASE THIN + ■ Q SERIF 12



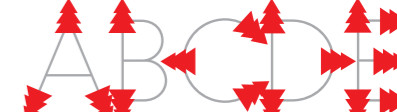
■ Q BASE THIN + ■ Q SERIF 17



■ Q BASE THIN + ■ Q SERIF 22



■ Q BASE THIN + ■ Q SERIF 27



■ Q BASE THIN + ■ Q SERIF 32



■ Q BASE THIN + ■ Q SERIF 03



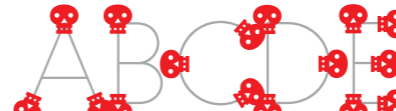
■ Q BASE THIN + ■ Q SERIF 08



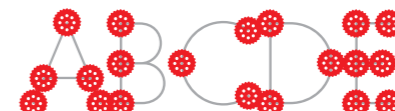
■ Q BASE THIN + ■ Q SERIF 13



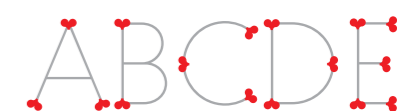
■ Q BASE THIN + ■ Q SERIF 18



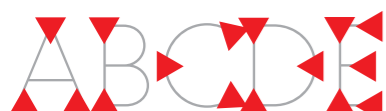
■ Q BASE THIN + ■ Q SERIF 23



■ Q BASE THIN + ■ Q SERIF 28



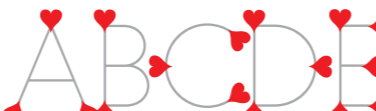
■ Q BASE THIN + ■ Q SERIF 33



■ Q BASE THIN + ■ Q SERIF 04



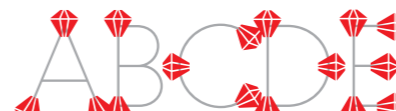
■ Q BASE THIN + ■ Q SERIF 09



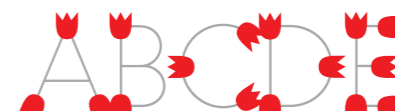
■ Q BASE THIN + ■ Q SERIF 14



■ Q BASE THIN + ■ Q SERIF 19



■ Q BASE THIN + ■ Q SERIF 24



■ Q BASE THIN + ■ Q SERIF 29



■ Q BASE THIN + ■ Q SERIF 34



■ Q BASE THIN + ■ Q SERIF 05



■ Q BASE THIN + ■ Q SERIF 10



■ Q BASE THIN + ■ Q SERIF 15



■ Q BASE THIN + ■ Q SERIF 20



■ Q BASE THIN + ■ Q SERIF 25



■ Q BASE THIN + ■ Q SERIF 30



■ Q BASE THIN + ■ Q SERIF 35

Q BASE COMBINATIONS

ABCDE

Q BASE DOTS

+

ABCDE

Q BASE NORMAL

=

ABCDE

■ Q BASE DOTS + ■ Q BASE NORMAL

ABCDE

Q BASE STENCIL

+

ABCDE

Q BASE THIN

=

ABCDE

■ Q BASE STENCIL + ■ Q BASE THIN

ABCDE

Q BASE NORMAL

+

ABCDE

Q BASE HEAVY

=

ABCDE

■ Q BASE NORMAL + ■ Q BASE HEAVY

ABCDE

Q BASE HEAVY

+

ABCDE

Q BASE SQUARES

=

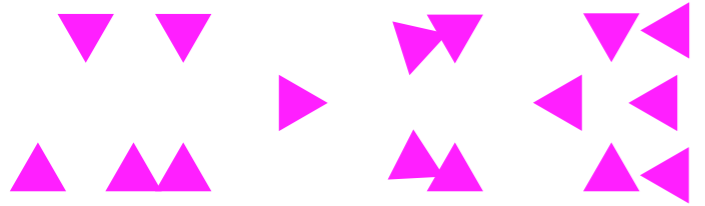
ABCDE

■ Q BASE HEAVY + ■ Q BASE SQUARES

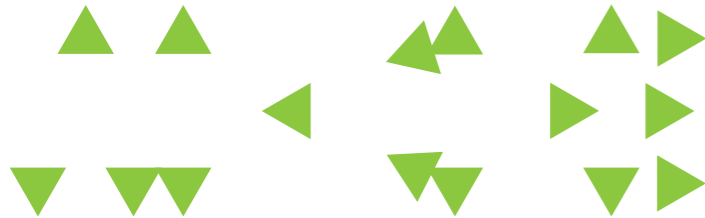
Q BASE COMBINATIONS



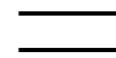
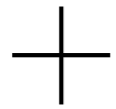
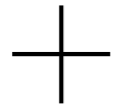
Q BASE DOTS



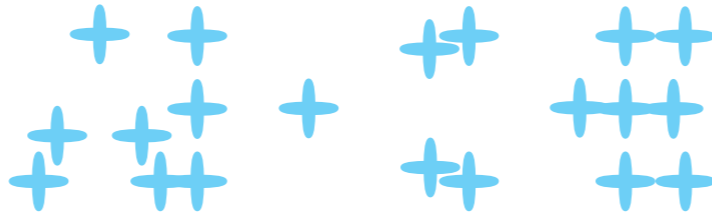
Q SERIF 04



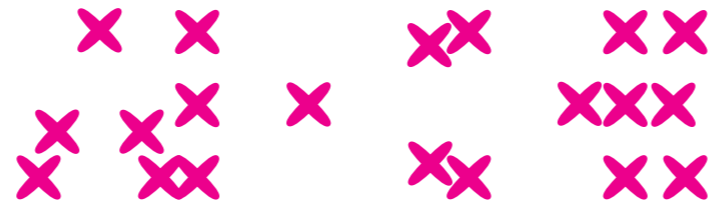
Q SERIF 05



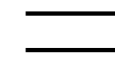
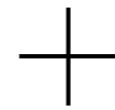
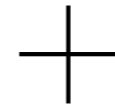
Q BASE THIN



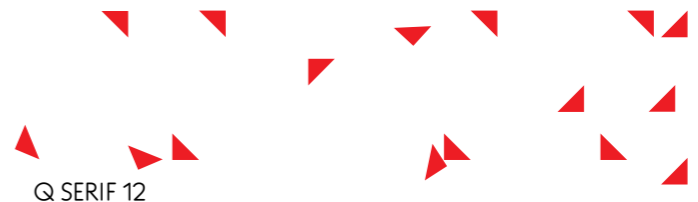
Q SERIF 06



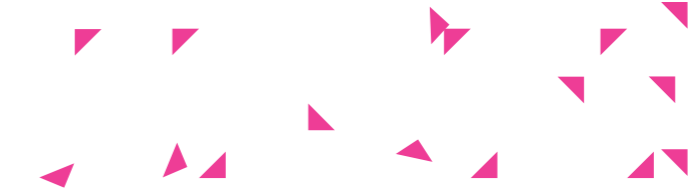
Q SERIF 07



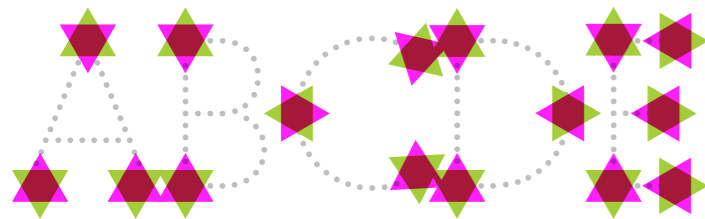
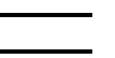
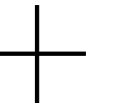
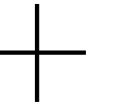
Q BASE STENCIL



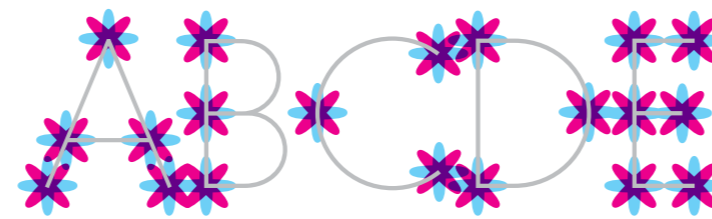
Q SERIF 12



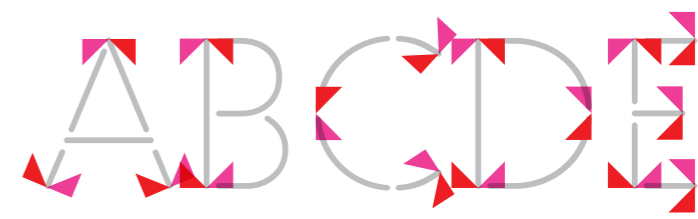
Q SERIF 13



■ Q BASE DOTS + ■ Q SERIF 04 + ■ Q SERIF 05



■ Q BASE THIN + ■ Q SERIF 06 + ■ Q SERIF 07

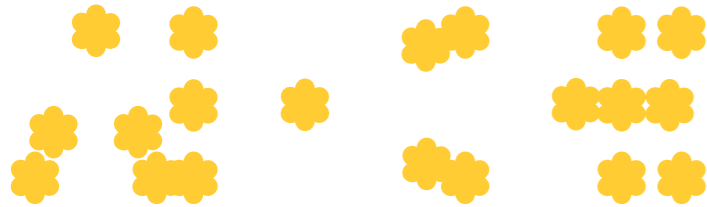


■ Q BASE STENCIL + ■ Q SERIF 04 + ■ Q SERIF 05

Q BASE COMBINATIONS



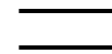
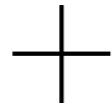
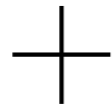
Q BASE DOTS



Q SERIF 34



Q SERIF 01



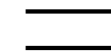
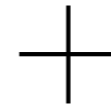
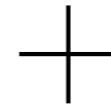
Q BASE THIN



Q SERIF 15



Q SERIF 16



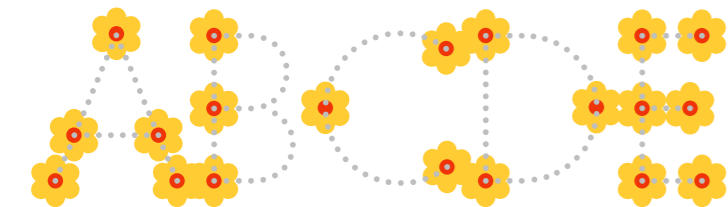
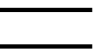
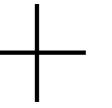
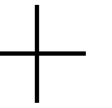
Q BASE STENCIL



Q SERIF 10



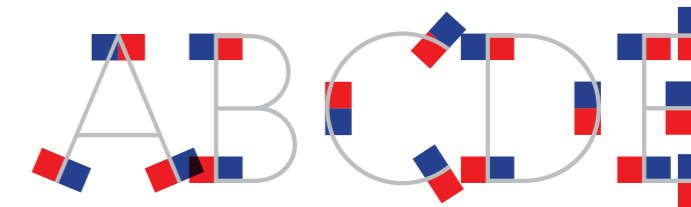
Q SERIF 11



■ Q BASE DOTS + ■ Q SERIF 34 + ■ Q SERIF 01



■ Q BASE THIN + ■ Q SERIF 15 + ■ Q SERIF 16

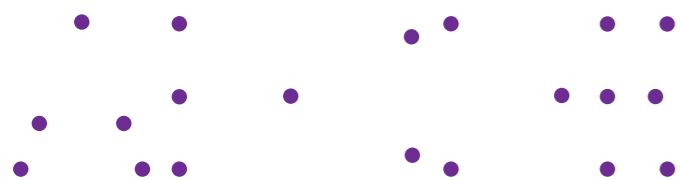


■ Q BASE STENCIL + ■ Q SERIF 10 + ■ Q SERIF 11

A B C D E

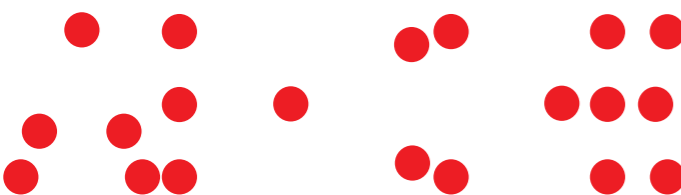
+

Q BASE DOTS



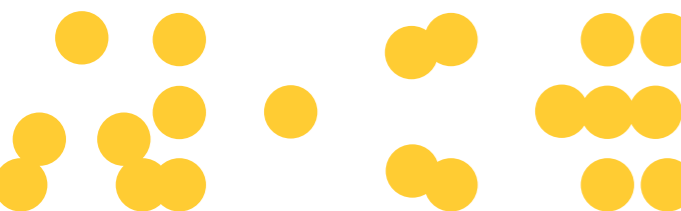
+

Q SERIF 01



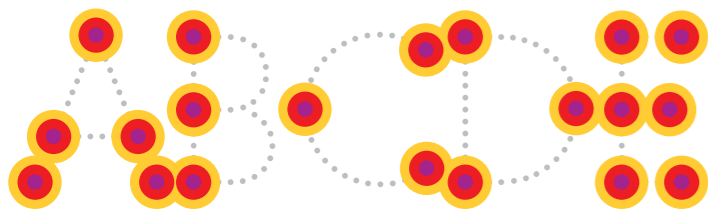
+

Q SERIF 02



=

Q SERIF 03



■ Q BASE DOTS + ■ Q SERIF 01 + ■ Q SERIF 02 + ■ Q SERIF 03

A B C D E

+

Q BASE THIN



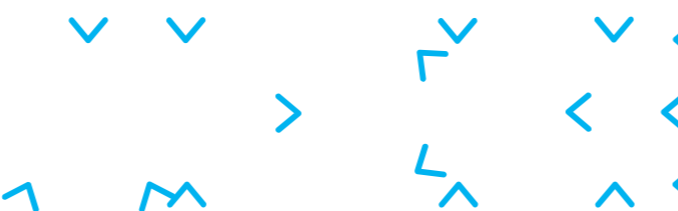
+

Q SERIF 19



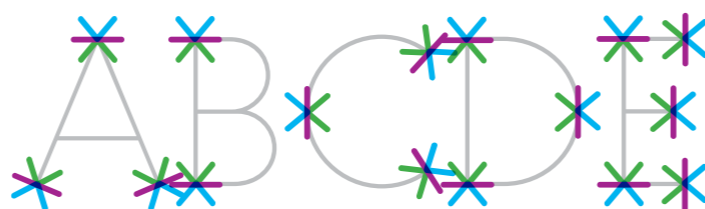
+

Q SERIF 18



=

Q SERIF 20



■ Q BASE THIN + ■ Q SERIF 19 + ■ Q SERIF 18 + ■ Q SERIF 20

A B C D E

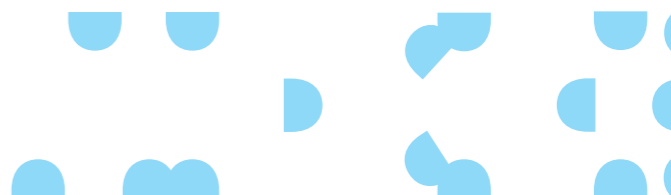
+

Q BASE STENCIL



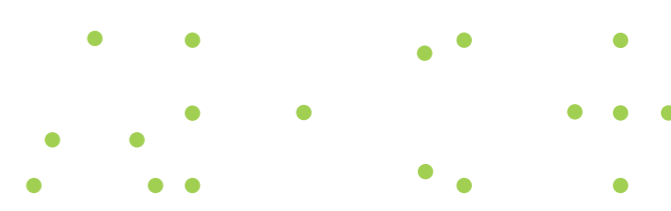
+

Q SERIF 30



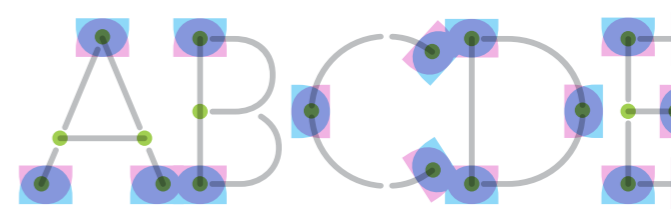
+

Q SERIF 31

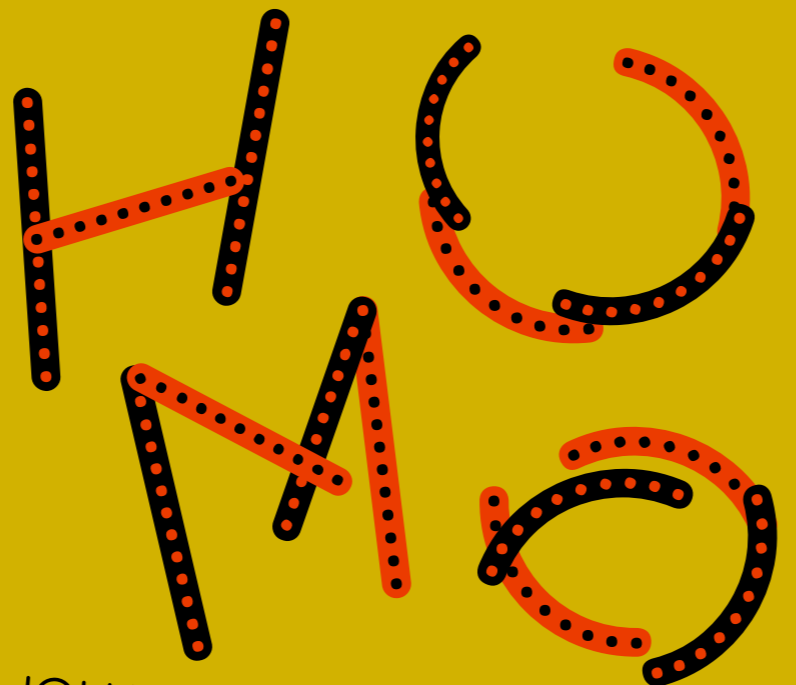


=

Q SERIF 01



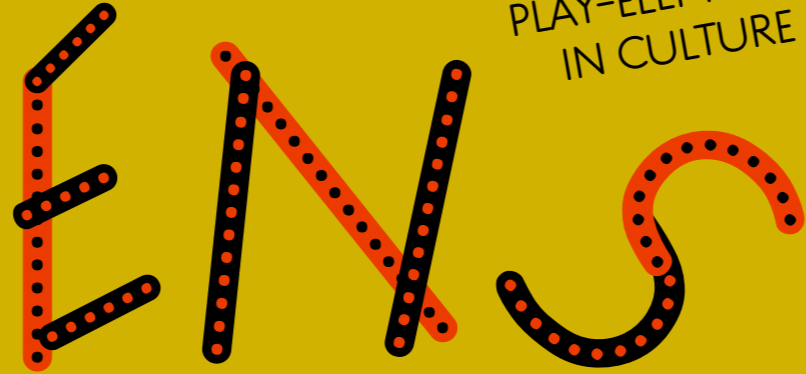
■ Q BASE STENCIL + ■ Q SERIF 30 + ■ Q SERIF 31 + ■ Q SERIF 01



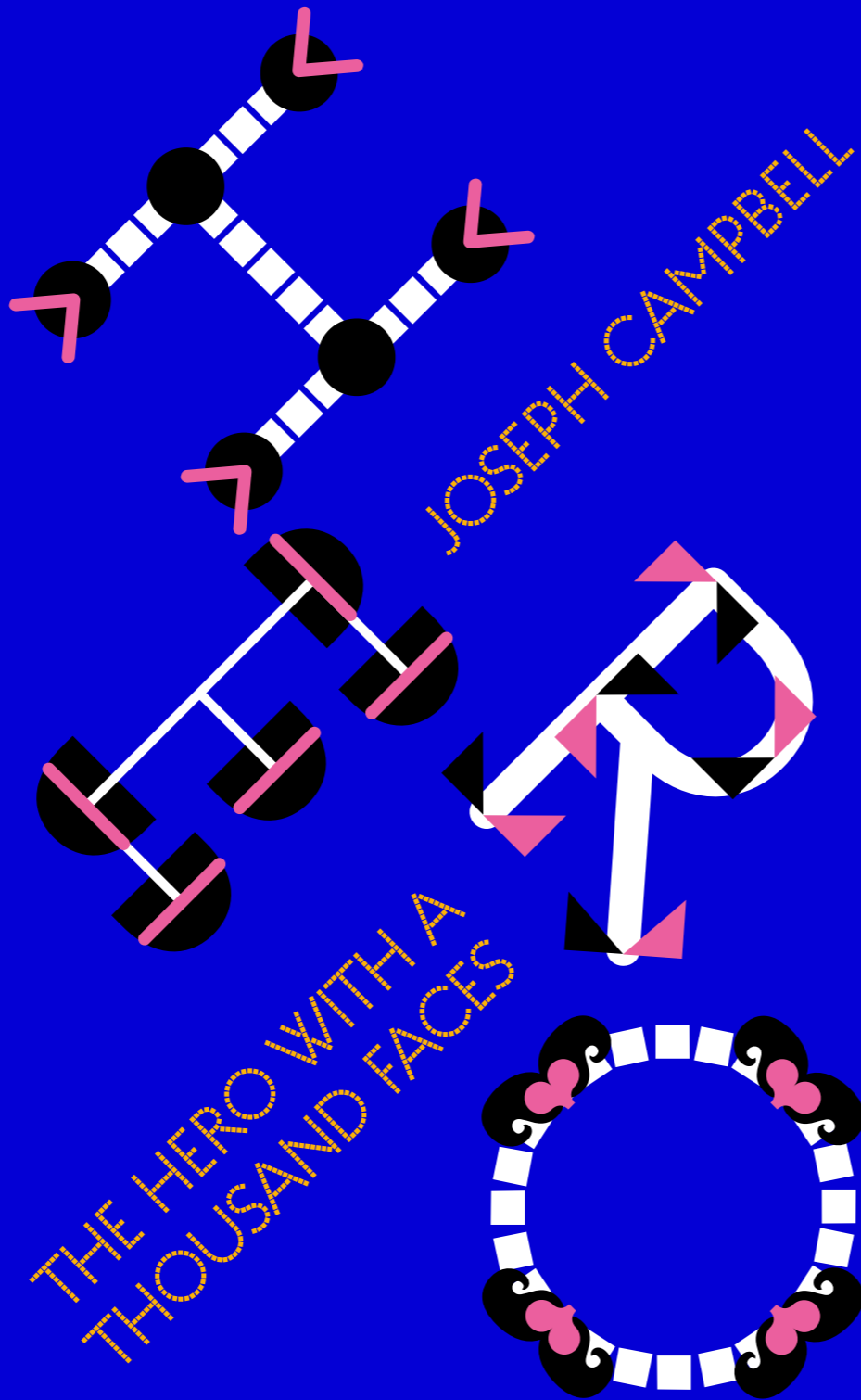
JOHAN HUIZINGA



A STUDY OF THE
PLAY-ELEMENT
IN CULTURE



BOOK COVER BY TEREZA BETTINARDI
USING ■ Q-MECHANIC & □ Q BASE NORMAL

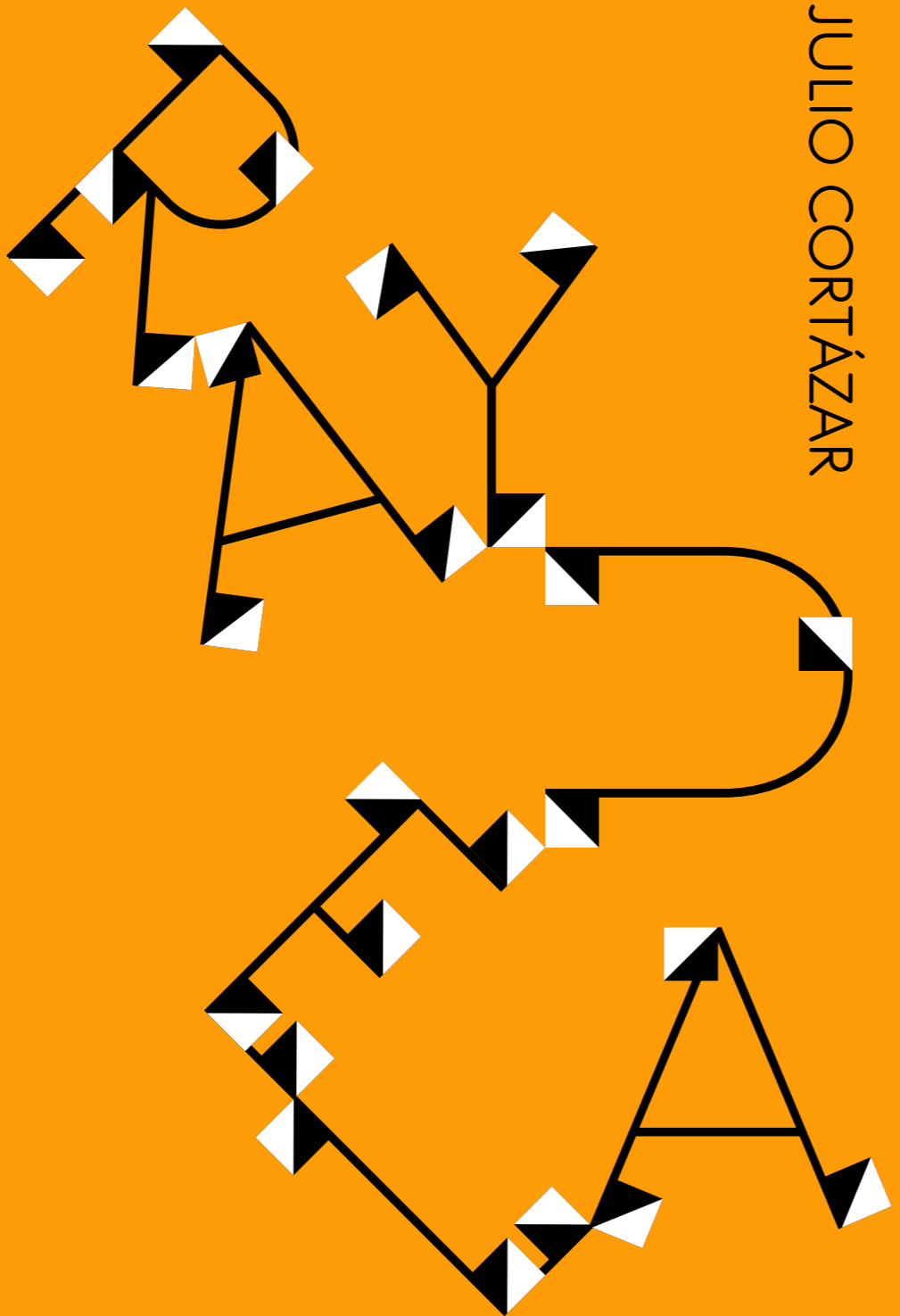


BOOK COVER BY TEREZA BETTINARDI
USING ■ Q-BASE SQUARES & □ Q-SERIFS 02, 20, 18, 30, 12, 13, 08, 33

MARIO
QUINTANA
CADERNO

BOOK COVER BY TEREZA BETTINARDI
USING ■ Q-SHAPES 03

JULIO CORTÁZAR



BOOK COVER BY TEREZA BETTINARDI
USING □ Q BASE THIN & □ Q SERIF 11 & ■ Q SERIF 13

GEORGES
PEREC

L A

V I

E

MODE
D'EMPLOI

GEORGES
PEREC

O L S

I I O

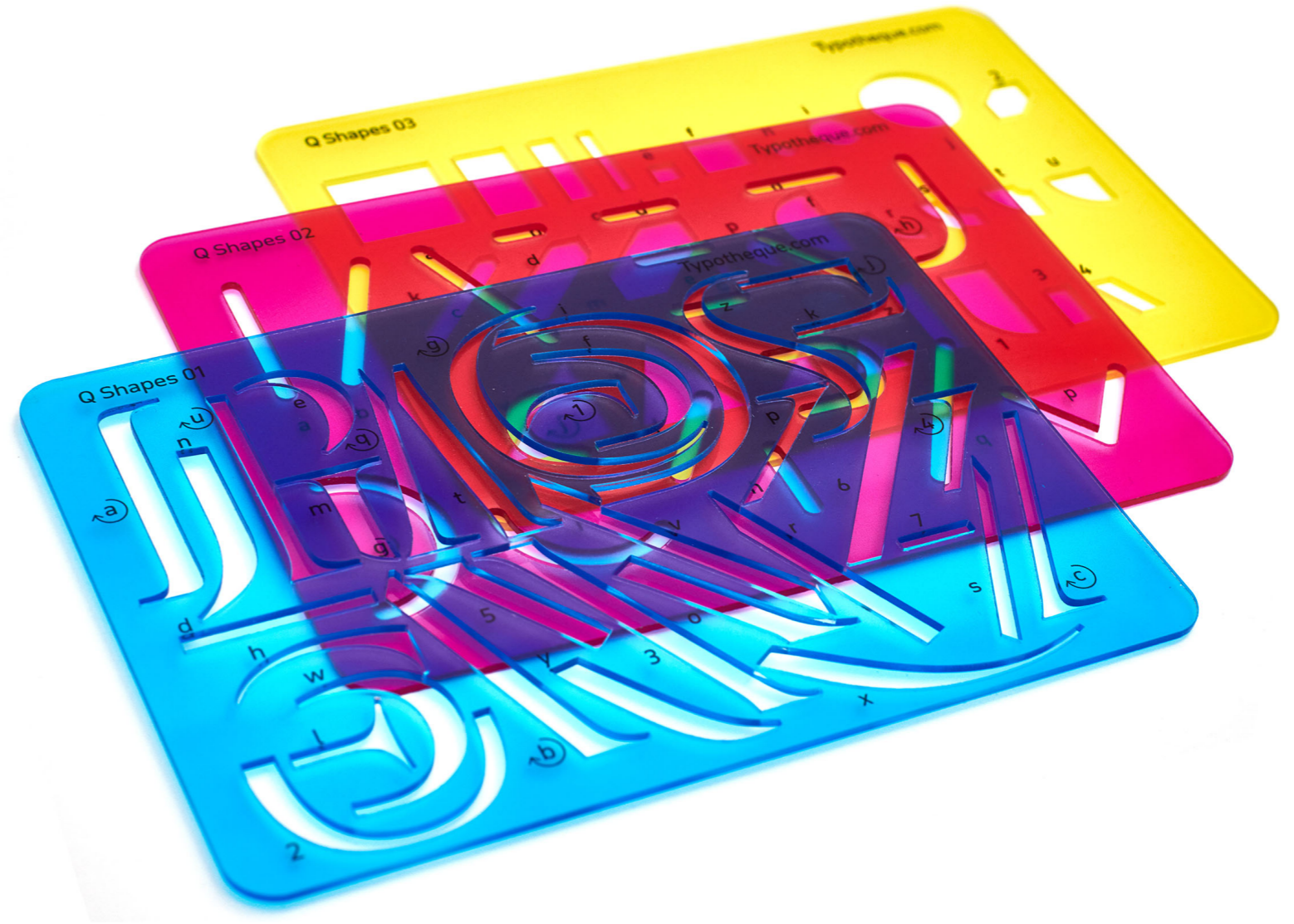
S E S

UNE
HISTORIE
DES ANNÉES
SOIXANTE

BOOK COVER BY TEREZA BETTINARDI
USING ■ Q SHAPES 01 & ■ Q SHAPES 02

The Q Project comes with a digital collection of basic elements that can be combined to create new shapes. The collection is provided as set of fonts and also as an editable PDF file, as well as physical drafting templates.

[See the Templates online](#)





A = b + c + d-

I = a + a* + e + f C = g + h

D = a + a* + i

E = a + a* + j + k + l E = a + a* + j + l

G = g + h + m

H = a + a* + a + a* + d

I = a + a*

J = a- + a-* + n



K = a + a* + o + p

L = a + a* + k

M = q + r + s + t

N = u + u* + v

O = g + g*

P = a + a* + w

Q = g + g* + x

R = a + a* + y



S = 1 + 1* + z

T = a + a* + j + j*

U = a- + a-* + q* + 2

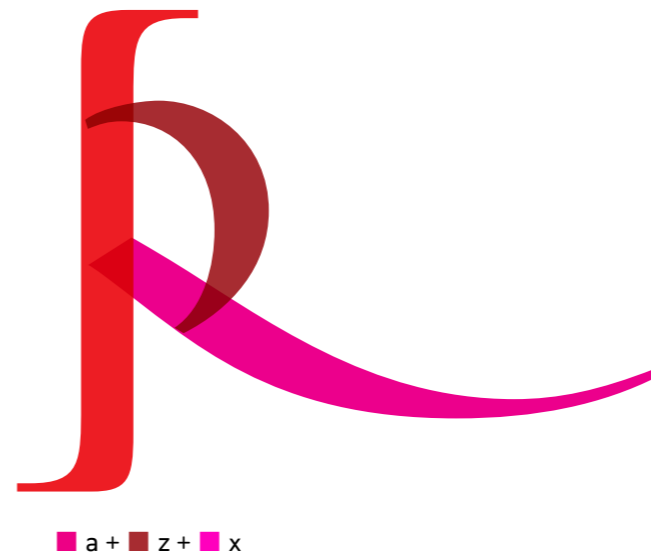
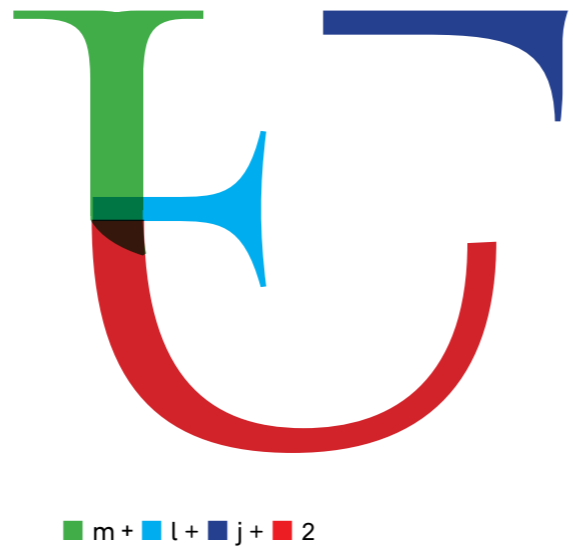
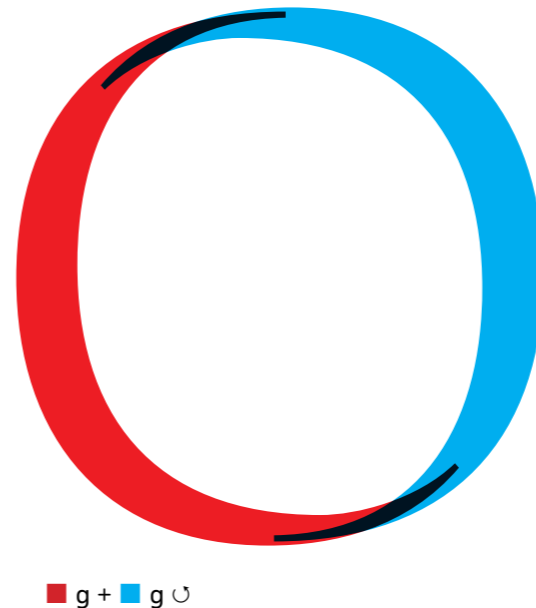
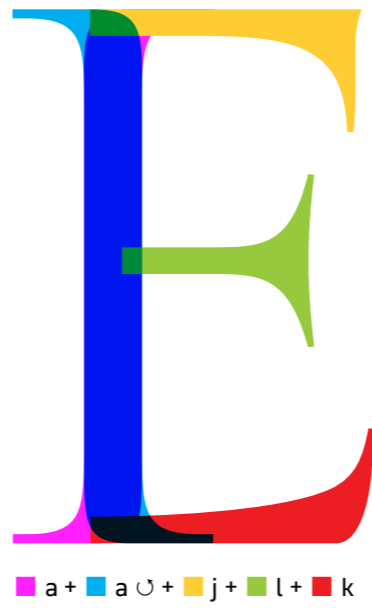
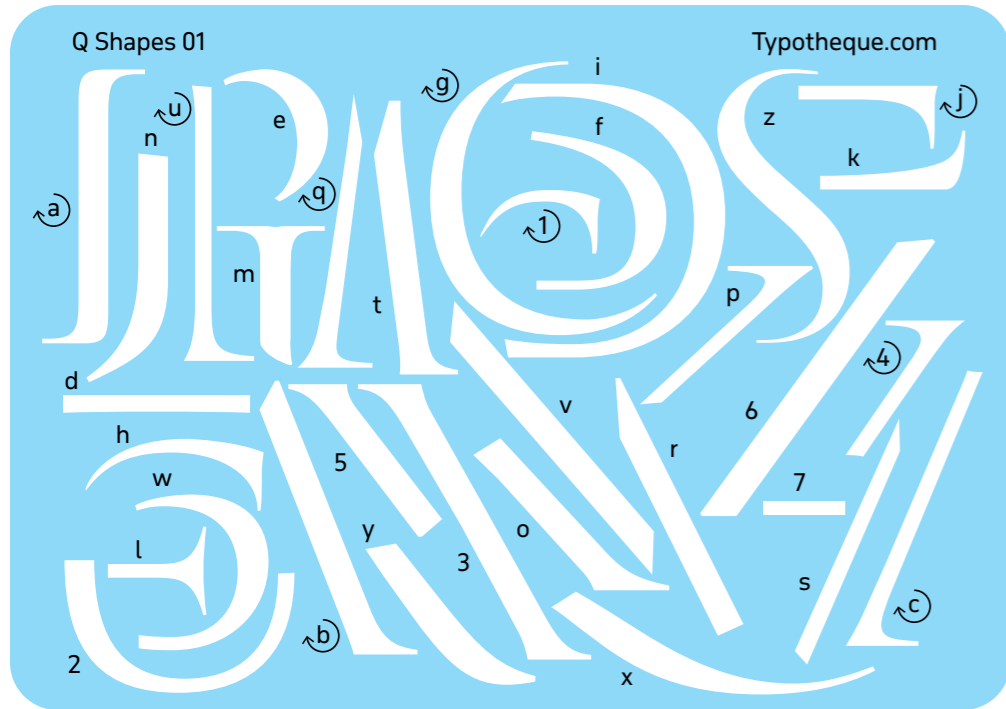
V = b* + c*

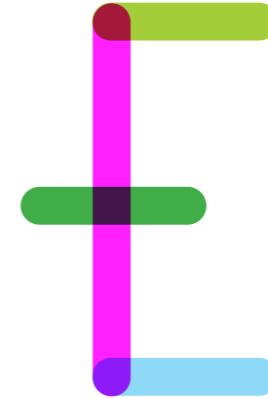
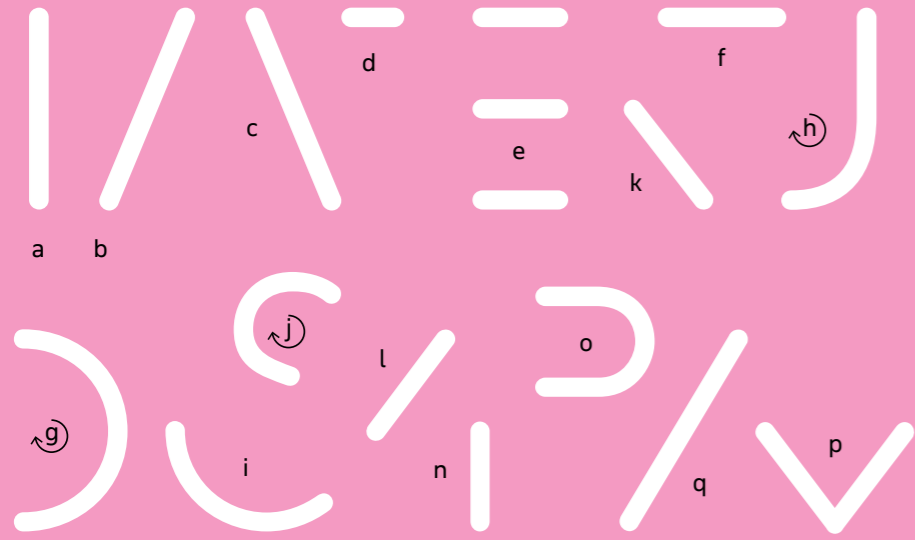
W = b* + c* + b* + c*

X = 3 + 4 + 4*

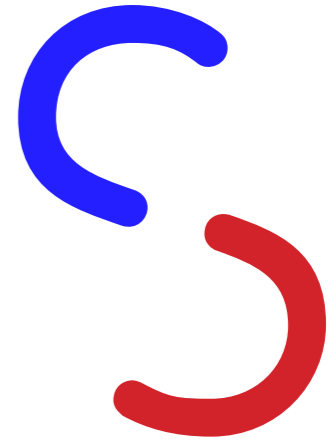
Y = a- + a-* 4 + 5

Z = 6 + j* + k + 7 + 7





a + e



j + j



l + o + h



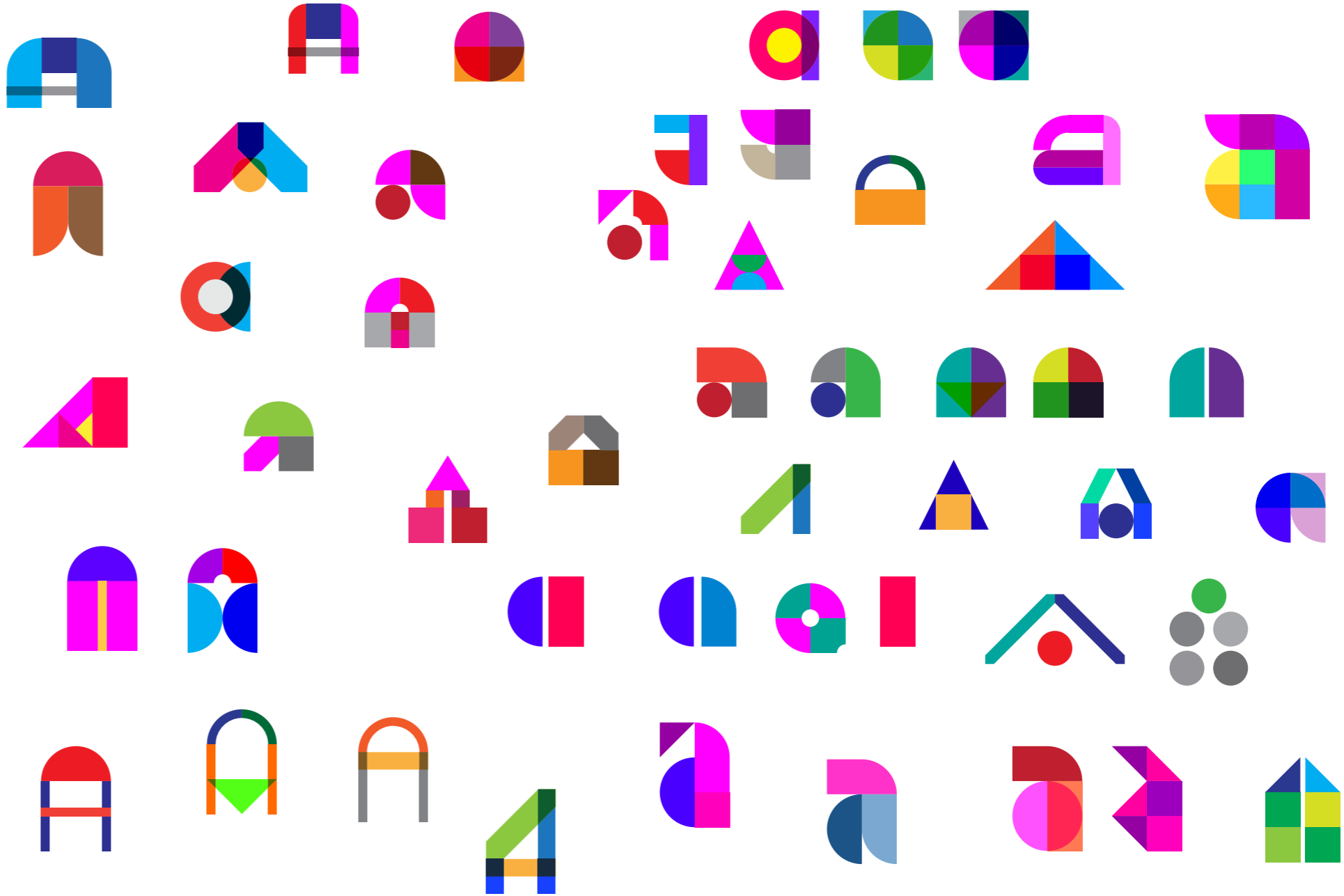
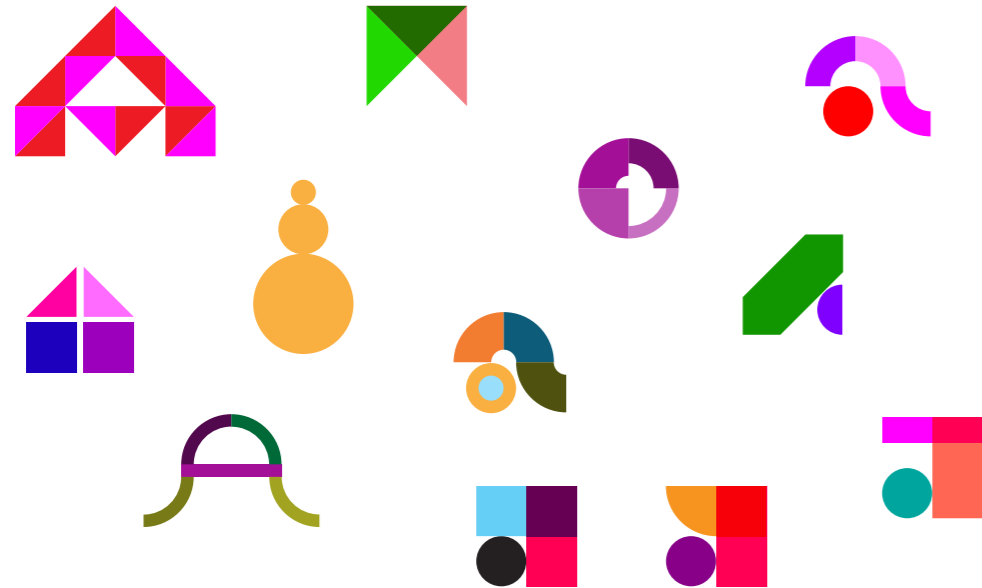
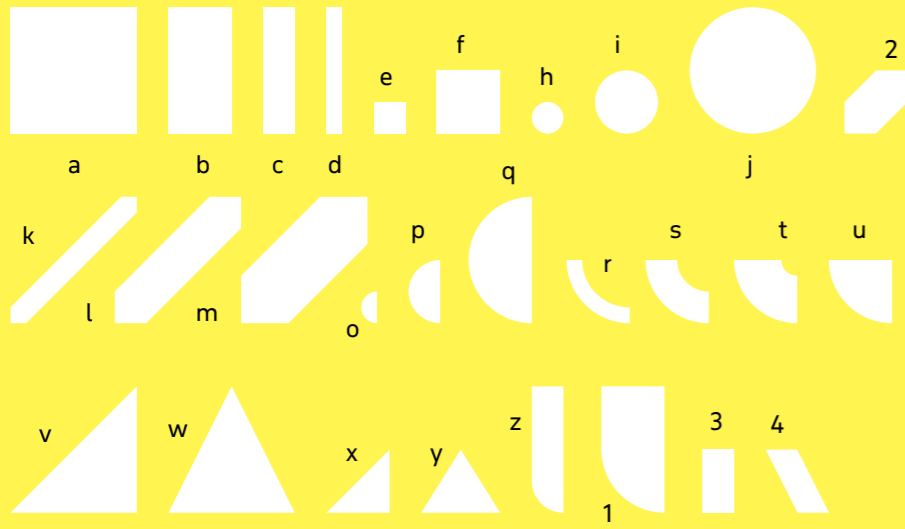
g + h + f



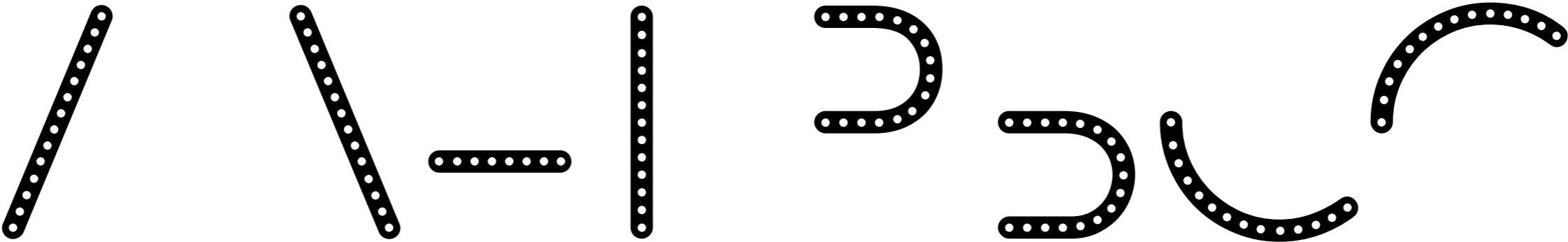
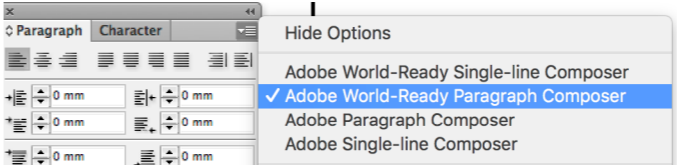
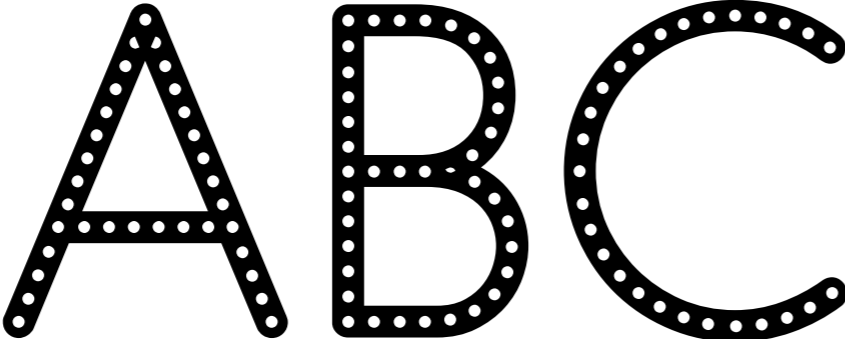
a + p + q

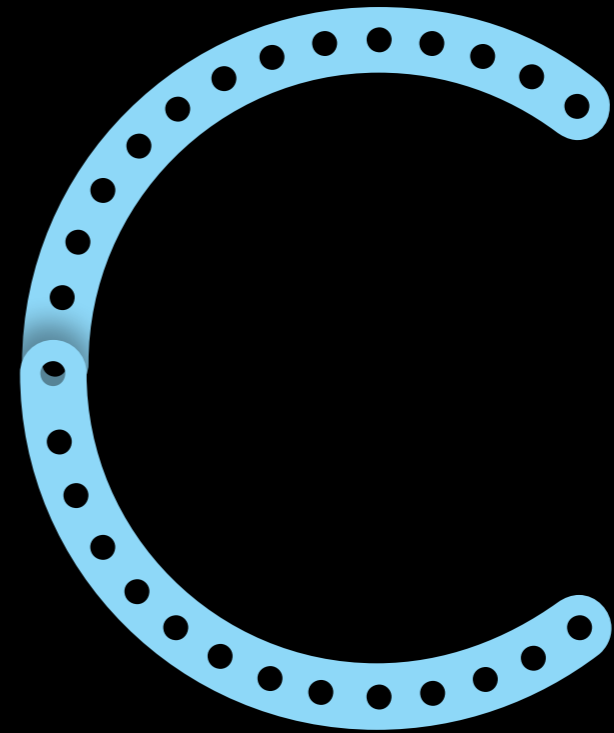
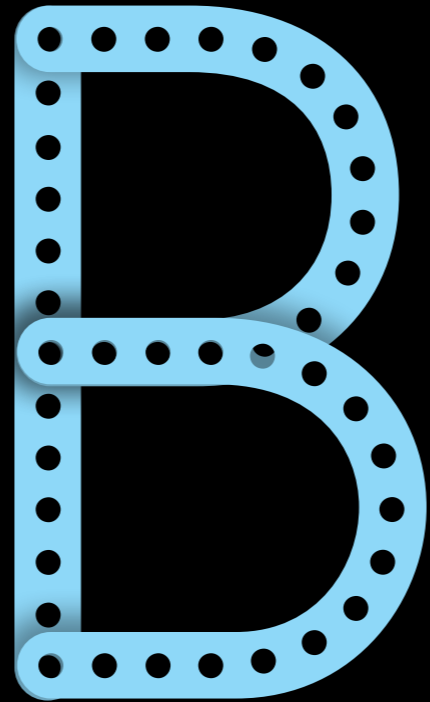
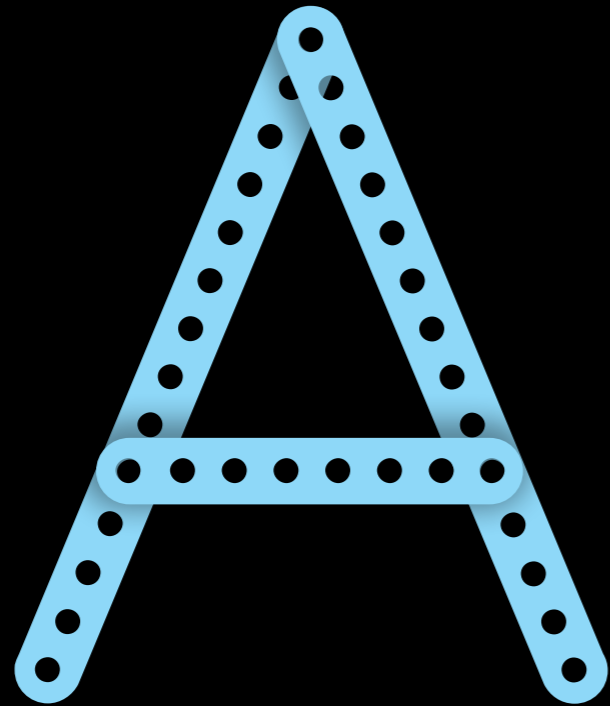
Q Shapes 03

Typotheque.com

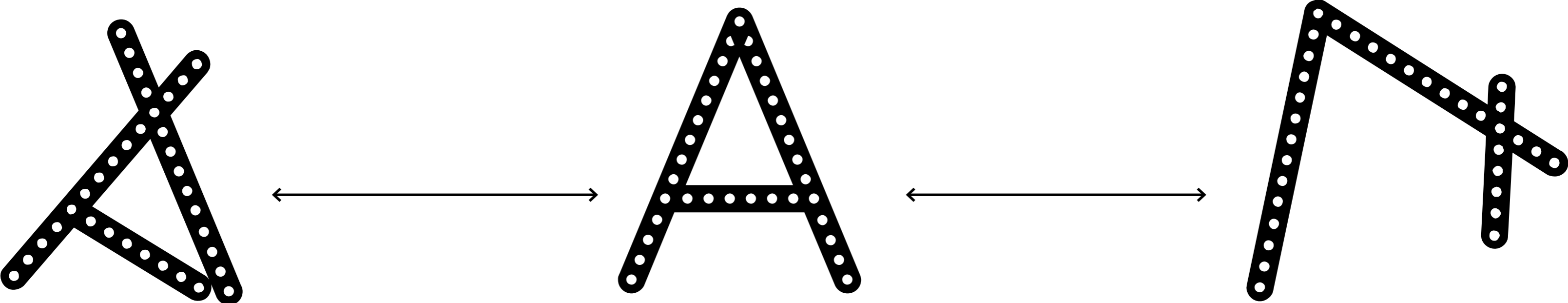


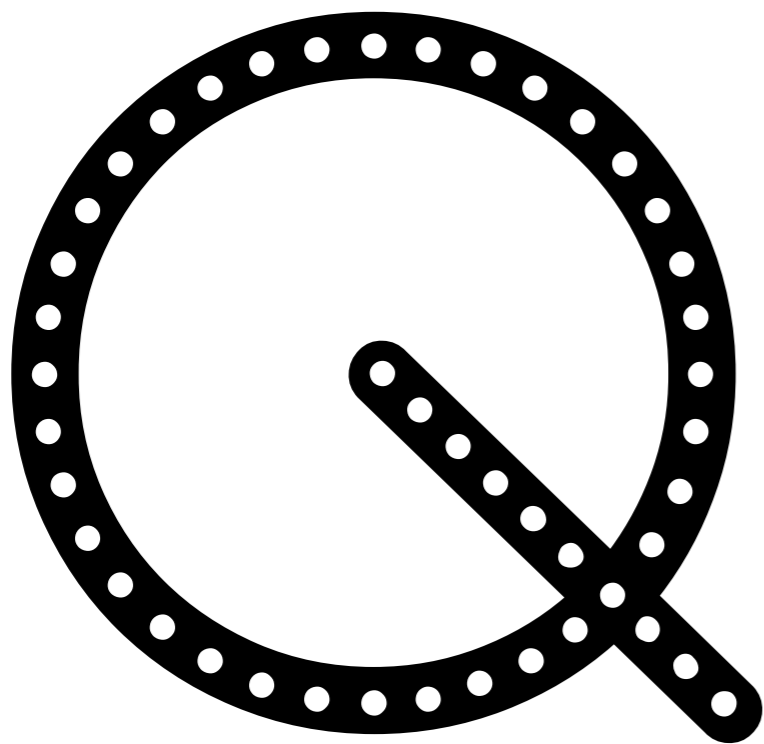
A separate style of Q called Mechanic comes with an unusual OpenType feature that allows you to break letters into their basic shapes and rearrange them. Activate Discretionary Ligatures AND World Ready Composer, to break the letters into the strokes:





Finally, Q includes a variable font whose sliders control the construction of the forms.





MECHANIC

MECHANIC

MECHANIC

MECHANIC

MECHANIC

Q PROJECT

■ Q BASE DOTS + ■ Q SERIF 26

TPTQ.COM/Q