

Typotheque type specimen & OpenType feature specification.  
Please read before using the fonts.

# Nara Std

OpenType font family supporting Latin based European languages, with their own small caps, with extensive typographic features.



- Western European (1252 Latin 1)
- Central European (1250 Latin 2)
- Baltic (1257)
- Turkish (1254)

Designed by Andrej Krátky, 1989-2009  
Completed and remastered by Typotheque

OpenType features in Nara



What is OpenType?

OpenType is a cross-platform font format developed by Adobe and Microsoft. It has a potential to provide advanced typographic features such as multilingual character sets, ligatures, small capitals, various numeral styles, and contextual substitutions.

OpenType, as the new industry standard, supports Unicode, which enables the fonts to contain a large number of characters. While PostScript fonts are technically limited to a maximum of only 256 characters, OpenType fonts can have more than 65,000 glyphs. This means that a user does not need to have separate fonts for Western, Central European, Baltic, Cyrillic or Greek languages, but could have one single file which supports all these encodings.

OpenType fonts work in all applications, however only some applications take advantage of the advanced OpenType features. Other applications will only use the first 256 characters. For more about OpenType information go to [www.typotheque.com/opentype](http://www.typotheque.com/opentype)



# Nara Std

## Turkish

Typotheque Mac ve PC için orijinal fontları geliştiren ve pazarlayan, Hollanda Hague'de bulunan bir dökümcülük tipidir. Taahhüdümüz harf tarihçesinin devamını sağlayarak, zamanımızı yansıtan kaliteli harfler oluşturarak, bağımsız tipte dökümhanelerin geleneklerini devam ettirmek ve bu ihtiyaçlara cevap vermektir. Perakende kütüphaneyi geliştirmeye ilaveten, Typotheque birçok uygulama ve diller için geleneksel tipte çözümler

## Lithuanian

Typotheque – šriftų gamybos įmonė Hagoje, Nyderlanduose, kuria ir parduoda originalius fontus Mac ir PC platformoms. Mūsų tikslas yra puoselėti nepriklausomų šriftų kūrėjų tradiciją, prisidėti prie šrifto istorijos t stinumo kuriant kokybiškus šriftus, kurie atspindi mūsų laikmetį ir tarnauja mūsų reikmėms. Typotheque specializuojasi kurti įvairius klientų pageidaujamus šriftus, pritaikytus įvairioms programoms ir kalboms. Typotheque – šriftų gamybos įmonė

## Albanian

Typotheque është një bashkim shtypjeje bazuar në Hagë të Holandës, që zhvillon dhe tregëton lloje shkrimesh për Mac dhe PC-in. Detyrimi ynë është që të vazhdojmë traditat e bashkimeve të shkrimeve të pavarura duke dhënë kontributin tonë të vogël në zinxhirin e vazhdueshëm të historisë së shkrimit, duke krijuar lloje shkrimi cilësore që pasqyrojnë kohën tone dhe plotëson nevojave tona. Përveç zhvillimit të biblioteke në detaje, Typotheque është

## Esperanto

Typotheque estas litertipaj fandejo kies sidejo troviĝas en Hago, Nederlando. Ĝi kreas kaj distribuas originalajn litertiparoj por Makintos kaj PK. Nia tasko estas daŭrigi la tradicion de la memstaraj presliteraj fandejoj donante nian kontribuadeton al la senĉesa sekvo de la tipografihistorio per la kreado de altkvalitaj litertiparoj reflektantaj niajn tempojn kaj respondantaj al ĝiaj bezonoj. Typotheque ne nur produktas aĉeteblan tipkolekton sed

## Esperanto

Typotheque estas litertipaj fandejo kies sidejo troviĝas en Hago, Nederlando. Ĝi kreas kaj distribuas originalajn litertiparoj por Makintos kaj PK. Nia tasko estas daŭrigi la tradicion de la memstaraj presliteraj fandejoj donante nian kontribuadeton al la senĉesa sekvo de la tipografihistorio per la kreado de altkvalitaj litertiparoj reflektantaj niajn tempojn kaj respondantaj al ĝiaj bezonoj. Typotheque ne nur produktas aĉeteblan

## Czech

Typotheque je písmolijna sídlící v Holandském Hágu, vyvíjející originální písma pro Mac a PC. Jsme zavázáni tradici nezávislých písmolijeni, přispívajících svým malým dílem do neustále se rozvíjející historie písmové tvorby, navrhováním vysoce kvalitních písem, které odrážejí naši dobu a reflektují její potřeby. Mimo vývoje vlastního sortimentu se Typotheque specializuje na vytváření specifických typografických řešení pro rozmanité potřeby a různé jazyky. Typotheque je písmolijna sídlící v Holandském Hágu, vyvíjející

## Indonesian

Typotheque adalah pembuat cetakan huruf yang beroperasi dari Den Haag di Negeri Belanda, yang mengembangkan dan memasarkan fonta orisinal untuk dipakai pada Mac dan PC. Kami memiliki komitmen untuk melanjutkan tradisi pembuat cetakan huruf yang independen, memberikan kontribusi menurut kemampuan kami pada kesinambungan sejarah cetakan huruf, menciptakan jenis cetakan huruf yang selaras dengan zaman dan melayani kebutuhan zaman tersebut. Selain mengembangkan koleksi untuk pasar umum, Typotheque

## Hungarian

A Typotheque betűtervező műhely, amely Hollandiában alakult, Hágában, ahol betűket fejleszt és forgalmaz Macintoshra és PC-re. Elkötelezettek vagyunk a független betűöntőműhelyek tradícióját, napjaink szűkségeitől kezdve igazodó kiváló minőségű fontjainkkal magunk is hozzá szeretnénk járulni a betűtörténet fejlődéséhez. A standard font-készletek készítése mellett a Typotheque egyedi betű-fejlesztésekre specializálódik különféle nyelvekhez és applikációkhoz. A Typotheque betűtervező műhely, amely Hollandiában alakult,

## Hawaiian

‘O Typotheque he wahi ho‘olehe‘e lua kēpana ma Ka Haka, Hōlani, a hana a kū‘ai aku mākou i nā lua kumu no ka Mac me ka PC. ‘O kā mākou ho‘ohiki ‘āna ka ho‘omau i ka mo‘olelo lō‘ihi loa o nā wahi ho‘olehe‘e lua kū‘oko‘a, a ka mālama ‘āna i ia mo‘olelo ‘oki ‘ole me ka ha‘aha‘a, ‘oiai e hana ana mākou i nā lua kēpana pono a maika‘i no kēia wā. Eia a‘e, koe ka hana ‘āna i ka waihana lua kēpana no ke kū‘ai aku kū‘ai mai, ‘o ka ‘oihana mākaukau loa a Typotheque ka hana ‘āna i nā lua kēpana kūikawa no nā pono a me nā ‘olelo

## Hawaiian

‘O Typotheque he wahi ho‘olehe‘e lua kēpana ma Ka Haka, Hōlani, a hana a kū‘ai aku mākou i nā lua kumu no ka Mac me ka PC. ‘O kā mākou ho‘ohiki ‘āna ka ho‘omau i ka mo‘olelo lō‘ihi loa o nā wahi ho‘olehe‘e lua kū‘oko‘a, a ka mālama ‘āna i ia mo‘olelo ‘oki ‘ole me ka ha‘aha‘a, ‘oiai e hana ana mākou i nā lua kēpana pono a maika‘i no kēia wā. Eia a‘e, koe ka hana ‘āna i ka waihana lua kēpana no ke kū‘ai aku kū‘ai mai, ‘o ka ‘oihana mākaukau loa a Typotheque ka hana ‘āna i nā lua kēpana kūikawa

## Luxemburgish

Typotheque ass eng Schreiftschmatt aus Den Haag, den Niederlanden, déi original Schreiftarten fir den Mac and den PC entwéckelt an vermaarkt. Eis Verpflichtung ass et, déi Tradition vun onafhängegen Schreiftschmieden weider zu féieren, en ganz kleng wéineg zu der fortschreikender Schreiftgeschicht beizedroen, an Qualitätsschreiftarten ze kreieren, déi den Gescht vun eiser Zeit reflektéieren an denen entspreichenden Bedürfnisser nokëmm. Zousätzlech zu der Entwecklung vun den Einzelhandelsbibliothéiken spëzialiséiert sech Typotheque op

## Icelandic

Typotheque er leturfyrirtæki í Haag í Hollandi. Fyrirtækið þróar og markaðssetur upprunalegar leturtegundir fyrir Makka og PC. Fyrirtækið einbeittir sér að viðhalda hefðum sjálfstæðra leturhönnuða og leggja þannig að mörkum til að viðhalda samfelldu í sögu leturgerða. Jafnframt þessu er leitast við að hanna gædaletur sem endurspeglar niðminni og þjórnar tilgangi samtímans. Typoteque býður viðskiptavinum sínum að velja úr safni af leturgerðum en fyrirtækið tekur ein fremur að sér að hanna letur fyrir alls konar notkun og fjölmörg tungumál.

## Portuguese

Typotheque é uma fundição tipográfica situada em Haia, Países Baixos, desenvolvendo e comercializando fontes originais para Mac e PC. O nosso compromisso é continuar com a tradição das fundições tipográficas independentes, contribuindo um pouco para a sequência contínua da história da tipografia: criando tipos de letra de qualidade que reflectem os nossos tempos e servem as suas necessidades. Além de desenvolver a tipoteca existente, Typotheque é especializado em soluções tipográficas personalizadas para uma variedade de

## Swedish

Typotheque är ett nederländskt stiljuteri med bas i Haag, som utvecklar och marknadsför originalfonten för Mac och PC. Vårt mål är att fortsätta bidra med vår lilla bit till den fortsatta typhistoriens, skapa typsnitt som reflekterar vår tid och möter dess behov. Förutom utvecklingen av vårt kommersiella typsnittsbibliotek, specialiserar sig Typotheque på specialritade typsnittslösningar för en mängd applikationer och språk. Typotheque är ett nederländskt stiljuteri med bas i Haag, som utvecklar och marknadsför

## Swedish

Typotheque är ett nederländskt stiljuteri med bas i Haag, som utvecklar och marknadsför originalfonten för Mac och PC. Vårt mål är att fortsätta bidra med vår lilla bit till den fortsatta typhistoriens, skapa typsnitt som reflekterar vår tid och möter dess behov. Förutom utvecklingen av vårt kommersiella typsnittsbibliotek, specialiserar sig Typotheque på specialritade typsnittslösningar för en mängd applikationer och språk. Typotheque är ett nederländskt stiljuteri med bas i Haag, som utvecklar

## MALTESE

TYPOTHEQUE, HIJAFABBRIKATA 'STILITA' L-ITTAJPIARMWAQQAF THE HAGUE L-OLANDA, LITIZVILUPPAUTPOGGIGHALL-BEIGHFIS-SUQ KUMMERĠJALLFONTSORIGINALIGHALL-MAC UKOMPUTERS(PC), IL-KARIGATAGHNAHILI NKOMPLUT-TRADIZZJONIJETTA'DAWNIT-TIP TAFABBRIKINDEPENDENTNIKKONTRIBWIXXU, BIL-PARTIZGHIRATAGHNA,GHAS-SEKWENZA KONTINWATA'L-ISTORIATA'L-ITTAJPIAR, NOHOLQUSTILITA'KARATTRIPARTIKULARI LIJIRREFLETTUL-HINTAGHNAVOLUTFIX-XOGHOLULJISERVUGHALL-UZUBZONNJUZI JKUNMEHTIEG.MA'DANWIEHEDIJSTA'ZID,LI

## NORWEGIAN

Typotheque ER EIT FONTHUS SOM LIGG I HAAG, NEDERLAND. VI UTVIKLAR OG SEL ORIGINAL FONTAR FOR MAC OG PC. VÅR VISJON ER Å FØRE VIDARE TRADISJONANE TIL DEI UAVHENGIGE FONTHUSA OG Å GJE VÅRT BIDRAG TIL DENNE HISTORIA VED Å SKAPE KVALITETSFONTAR SOM REFLEKTERER VÅR TID OG MØTER SAMTIDA SINE KRAV. I TILLEGG TIL Å UTVIKLE FONTBIBLIOTEKET, SPESIALISERER TYPOTHEQUE SEG I SKAPING AV SPESIALLAGA FONTAR TIL EIT

## IRISH GAELIC

IS É COMHLACHT CLÓSCRÍOBH TEILGCHÉARTA É TYPOTHEQUE ATÁ SUITE SA HAGUE SAN ÍSLTÍR AGUS A THABHARFANN FAOI UAIR OIRIGUÍNACH A FHOIRBAIRT AGUS A MHRAGADH FÁ CHOINNE AN MAC AGUS PC. IS É AIM AN CHOMHLACHT NÓ AN TRADIOIÚN CLÓSCRÍOBH TEILGCHÉARTA NEAMHSPLÉACH A LEANNAINT AR AGHAIDH AG TABHAIRT GIOTA BEAG DON SEICHEAMH LEANÚNACH DON STAIR CLÓSCRÍOBH, AG CRÚTHÚ 'TYPE-FACES' DEN SCOTH A MHACHNAÍONN

## WELSH

FFOWNDRI DEIP YDY TYPOTHEQUE YN YR HÂG, YR ISELDIROEDD SYDD YN DATBLYGU A MARCHNATA FFONTIAU GWREIDDOL AR GYFER MAC A PC. EIN HYMRWYMIAD NI YW I BARIHAU TRADDODIADAU FFWONDRIOEDD TEIP ANNIBYNNOL, GAN GYFRANNU EIN RHAN FECHAN NI'R DILYNIANT PARHAOL O HANES TEIP, GAN GREU TEIPIAU WYNEB O SAFON SY'N ADLEWYRCHU A GWASANAETHU YR OES SYDD OHONI. YN OGYSTAL Á DATBLYGU'R LLYFRGELL ADWERTHOL

## WELSH

FFOWNDRI DEIP YDY TYPOTHEQUE YN YR HÂG, YR ISELDIROEDD SYDD YN DATBLYGU A MARCHNATA FFONTIAU GWREIDDOL AR GYFER MAC A PC. EIN HYMRWYMIAD NI YW I BARIHAU TRADDODIADAU FFWONDRIOEDD TEIP ANNIBYNNOL, GAN GYFRANNU EIN RHAN FECHAN NI'R DILYNIANT PARHAOL O HANES TEIP, GAN GREU TEIPIAU WYNEB O SAFON SY'N ADLEWYRCHU A GWASANAETHU YR OES SYDD OHONI. YN OGYSTAL Á DATBLYGU'R LLYFRGELL

## Available versions

Nara Std Light

Nara Std Light Cursive

*Nara Std Light Italic*

Nara Std Regular

Nara Std Regular Cursive

*Nara Std Regular Italic*

Nara Std Medium

Nara Std Medium Cursive

*Nara Std Medium Italic***Nara Std Bold****Nara Std Bold Cursive*****Nara Std Bold Italic*****Nara Std Black****Nara Std Black Cursive*****Nara Std Black Italic***

## About the font

Nara explores gaps in traditional type classification. It exhibits characteristics of humanist typefaces, such as an oblique axis of contrast between the thick and thin strokes (as in *Garamond*, *Bembo*, etc.), but also characteristics of modern typefaces, such as high contrast, narrower underlying letter structures, and flat, unbracketed serifs (as in *Bodoni*, *Didot*, etc). The result is a lively, dynamic typeface that comes with two different styles for emphasis — narrow upright cursive, and slanted italic. The typeface's character is even more distinctive in its heavy weights, where the slanted humanist axis of contrast produces surprisingly contemporary lettershapes. Nara (under its working name *Adriq*) originated in the late 1980s as a student project of Andrej Krátky at the Prague Academy of

Applied Arts. It was digitised in METAFONT, and was probably the first digital font in Central Europe, before PostScript was readily available. It took 20 years to complete it, to convert the original drawings to bézier curves, to complete the character set, and most importantly, to give it the refined details and advanced OpenType features of a 21st century font. Andrej Krátky worked with Typotheque's Peter Biľak and Nikola Djurek to complete the project.

## About the designer

Andrej Krátky was born in Czechoslovakia, studied in Prague (now Czech republic) and USA. After starting his career as a graphic designer he co-founded the CD-Creative advertising agency in Bratislava, Slovakia. He designed FF Bradlo, published by FontShop in 1994.

AFTER SCHILLER'S 'A MAIDEN FROM AFAR'

By the filling station on La Cienaga a burger joint somehow survives. This Sunday morning a pink Thunderbird sags at the kerb, and an old Studebaker, paint flaking.

Suzy got a job waitressing there, she doesn't quite remember how or when. She turns up for work just as the first bus trundles by, shifting gears at the corner, the double diesel's throaty roar making the plate glass tremble and glitter.

She didn't come from around there – nobody did. 'I left the Midwest – don't ask me when,' she said once. This morning she gets the key and goes to the john. The empty sky has that pale hazy look that means a hot day.

I like it when she stops to talk awhile. She brings a second cup of coffee, and 'You should try the espresso,' she says. 'God, I could do with a drink.' But with the boss watching she makes sure to smile at the customers.

NACH SCHILLERS 'DAS MÄDCHEN AUS DER FREMDE'

Neben der Tankstelle an der La Cienaga überlebt irgendwie ein Hamburgerladen. An diesem Sonntagmorgen lungern ein rosa Thunderbird und ein alter Studebaker mit abblätterndem Lack am Rinnstein.

Suzy bekam hier einen Job als Bedienung, sie weiß nicht einmal mehr wie und wann. Sie kommt zur Arbeit, als der erste Bus vorbeirumpelt, Gangwechsel an der Ecke, das heisere Brüllen des Achtzylinder-Diesels lässt die Gläser erzittern und glitzern.

Sie ist nicht von hier – niemand ist von hier. 'Irgendwann hatte ich Iowa satt – keine Ahnung, wann das war', sagte sie einmal. Heute morgen nimmt sie den Schlüssel vom Haken und geht aufs Klo. Der leere Himmel, bleich und diesig, kündigt einen heißen Tag an.

Ich mag es, wenn sie stehen bleibt und mit mir redet. Sie schenkt mir Kaffee nach. 'Den Espresso solltest du mal probieren', sagt sie, und 'Gott, könnte ich einen Drink brauchen.' Aber der Chef schaut zu, und das heißt, sie muss freundlich sein und die Kunden anlächeln.

You are the one to blame for this *bloodthirsty* sport.  
Eres tú la culpable de este juego *sangriento*.

Hurricanes in *dreams* sometimes still strike them down.  
Huracanes de *sueños* aún a veces las tumban.

*Follow me, my companion, in this wave of fear.*  
*Sígueme, compañera, en esa ola de angustia.*

*Nara* includes two different secondary scripts for situations where you need to emphasise a selection of text that is already italicised. The designer of *Nara* also explored the notions of what defines a secondary script. While the *Cursive* version is perfectly upright with a stroke structure inspired by handwriting, *Italic* uses a 12 degree slant.

# Overview of supported OpenType layout features

ı̇ab?! (doh-ehg) ▶ ı̇AB?! (DOH-EHG)

**iT** Case Sensitive forms (CASE)  
When function 'change to caps' is applied from within an application (not when text is typed in caps) appropriate case-sensitive forms are automatically applied. Regular brackets, parenthesis, dashes and hyphens are replaced with their capital forms.

Small Caps ▶ SMALL CAPS  
All Small Caps ▶ ALL SMALL CAPS

fig.1

**aA** Small Capitals & All Small Caps (SMCP & C2SC)  
In Adobe applications there are two methods of applying small capitals. The first one, Small Caps (☐ 𐀀H) fig. 1 replaces only lower case letters with small caps. The second method, All Small Caps, fig. 2 replaces also capital letters with small capitals, and replaces regular quotation marks, exclamation points and question marks, slashes and asterisk with lowered small caps variations.

fig.2

**Bb**

0ı2345 ▶ 0ı2345  
0ı2345 ▶ 0ı2345

**00** Slashed Zero (ZERO)  
Because in some circumstances '0', can be mistaken for an 'o', alternative forms of 'slashed zero' are available for all styles of figures

fıflffıffıfıfk ▶ fıflffıffıfıfk  
fı ▶ fı  
fı ▶ fı

**fi** Standard Ligatures (LIGA)  
Standard ligatures are those which are designed to improve the kerning and readability of certain letter pairs. For example, when this feature is activated, typing 'f' and 'i' will automatically produce the 'fi' ligature. Using ligatures does not affect the spelling and hyphenation of your text in any way.

2ı/2 3ı/10 4ı25/5ı00 ▶ 2½ 3¼ 4<sup>125</sup>/5ı00

**7e** Arbitrary Fractions (FRAC)  
Typotheque OpenType fonts already include a number of pre-designed fractions. Other arbitrary fractions are easily made by using the fraction feature.

(1) (2) (3) [4] [5] [6] ▶ ① ② ③ ④ ⑤ ⑥  
--> -> <-- --^, ^- ▶ → → ←↑↓  
-----> ▶ →

**ct** Discretionary Ligatures (DLIG)  
Nara includes handy features such as replacing hyphen and greater than/less than signs with real arrows, or automatic activation of circled numerals by enclosing them in parenthesis when the discretionary ligature feature is activated. Brackets activate alternative inverse enclosed numerals. Discretionary ligatures are off by default in Adobe applications.

x(1+1.42 × 6) = y37 ▶ x<sup>(1+1.42 × 6)</sup> = y<sup>37</sup>

**x<sup>2</sup>** Superscript / superiors (SUPS)  
Replaces all styles of figures (old style, tabular, lining) and letters with their superior alternates, which can be used for footnotes, formulas, etc. Superior characters are more legible than mathematically scaled characters, have a similar stroke weight, are spaced more generously, and better complement the rest of the text.

H2O (10,00 + \$500) ▶ H<sub>2</sub>O (10,00 + \$500)

**H<sub>2</sub>** Subscript / inferiors (SINF)  
Replaces all styles of figures (old style, tabular, lining) and letters with their inferior alternates, used primarily for mathematical or chemical notation. Inferior characters are more legible than mathematically scaled characters, have a similar stroke weight, are spaced more generously, and better complement the rest of the text.

{{[012-3456-789]}}  
 ({{[012-3456-789]}})  
 ({{[012-3456-789]}})  
 ({{[012-3456-789]}})

**123** Tabular Lining Figures (TNUM\_LNUM)  
 Tabular Oldstyle Figures (TNUM\_ONUM)  
**619** Proportional Oldstyle Figures (PNUM\_ONUM)  
 Proportional Lining Figures (PNUM\_LNUM)  
**123** Changes figures to any selected style: Lining figures which fit better with all-capital text, old-style figures, for use in a flow of lowercase and upper case text, or  
**619** tabular (fixed width) versions.

1st 2nd 3rd No1 ▶ 1<sup>st</sup> 2<sup>nd</sup> 3<sup>rd</sup> 1<sup>a</sup> 2<sup>o</sup> No1

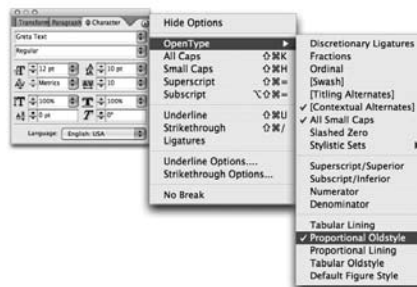
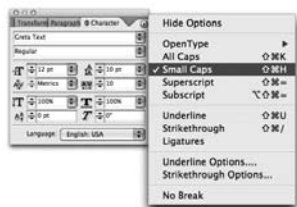
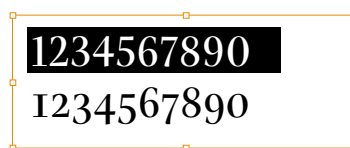
**1<sup>st</sup>** Ordinals (ORDN)  
 The ordinals feature replaces alphabetic glyphs (but not numerals) with their corresponding superior forms.

€\$c€¥m£¢GdFfNPTsRsR̄WKTP

**¥\$** Currency (CRCY)  
 Collection of various currency symbols: (U+20A0..U+20CF)

[[ ( ) ] ] ▶ [ ( ) ]

**SS 01** Stylistic Sets (ss01)  
 Nara includes some alternative characters which can be activated by turning on 'stylistic sets'. They make for an easy access to open brackets and paranthesis.



OpenType font format allows including more characters inside one single font file, so there is no need to have separate fonts for Old-style, Tabular, Lining figures, ornaments or small caps, given you are using an OpenType-savvy application such as Adobe InDesign®, Adobe Illustrator®, QuarkXPress 7, etc. Instead of selecting a different font, one only need to activate an OpenType feature which controls the desired OpenType layout feature.

OpenType fonts can contain various styles of numerals within one font. These different types of numbers are controlled by your typesetting application (such as Adobe InDesign®, Adobe Illustrator®, QuarkXPress 7, etc) Please note that not all applications support OpenType features. The software which cannot access these advances, for example Microsoft Word® will only display 'default' figures. If you do not specify which style of numerals you would like to use, the application will use the 'default' figures. Nara, for example, uses proportional lining figures as default.

For example, to access Small Caps, go to **Character menu**, and select **Small Caps**. Alternatively you can use a shortcut Command-Shift+H.

If you go to **Character** and then **OpenType** menu in Adobe applications, there you can change the numbers to any other desired numeral style.



Font overview

<b>Family name</b>	Nara Std
<b>Designed by</b>	Andrej Krátky
<b>Released</b>	June 2009
<b>Font format</b>	OpenType PS
<b>Supported encodings</b>	Latin 1 (1252), Latin 2 – Central European (1250), Turkish (1254), Baltic (1257), Superscripts & Subscripts, Number forms, Arrows, Currency symbols
<b>Supported languages</b>	Nara Text Std supports following languages: Afrikaans, Basque, Bokmål, Bosnian, Breton, Catalan, Croatian, Czech, Danish, Dutch, English, Esperanto, Estonian, Faroese, Finnish, French, German, Greenlandic, Hawaiian, Hungarian, Icelandic, Indonesian, Irish Gaelic, Italian, Latvian, Lithuanian, Luxemburgish, Maltese, Norwegian, Polish, Portuguese, Rhaeto-Romanic, Romani, Romanian, Sami, Serbian (Latin), Slovak, Slovene, Sorbian, Spanish, Swahili, Swedish, Turkish and Welsh
<b>Number of characters per style</b>	998
<b>Number of fonts in family</b>	15
<b>Supported OpenType features</b>	Capital Spacing (CSPS), Slashed Zero (ZERO), Denominators (DNOM), Arbitrary fractions (FRAC), Subscript/inferiors (SINF), Superscript/Superiors (SUPS), Case-Sensitive Forms (CASE), Small Capitals From Capitals (C2SC), Small Capitals (SMCP), Oldstyle Figures (ONUM), Lining Figures (LNUM), Tabular Figures (TNUM), Proportional Figures (PNUM), Ordinals (ORDN), Stylistic Alternates (SALT), Stylistic Sets (SS01), Standard Ligatures (LIGA), Discretionary Ligatures (DLIG), Ornaments (ORNM), Access all Alternates (AALT), Glyphs composition/decomposition (CCMP)
<b>Available at</b>	<a href="http://www.typotheque.com">www.typotheque.com</a>

For the complete list of applications taking advantage of OpenType layout features please visit [www.typotheque.com/fonts/opentype\\_feature\\_support](http://www.typotheque.com/fonts/opentype_feature_support)

**Typotheque**

Zwaardstraat 16, 2584 TX Den Haag, The Netherlands

E: [info@typotheque.com](mailto:info@typotheque.com), T: +31 70 322 6119, F: +31 84 831 6741

Nara, which format to choose

	PostScript font	OpenType Std	OpenType Pro
Number of glyphs per font	246	995	t.b.a
Number of supported languages	26	45	-
Number of fonts in family	30	15	-
Price per font	€ 60	€ 90	-
Price of complete package Nara	€ 420	€ 480	-