

*Typotheque type specimen & OpenType feature specification.
Please read before using the fonts.*

Brioni Sans Std

OpenType font family supporting Latin based European languages, with their own small caps, with extensive typographic features.

Lat Łąť

- Western European (1252 Latin 1)
- Central European (1250 Latin 2)
- Baltic (1257)
- Turkish (1254)

Designed by Nikola Djurek, 2010

OpenType features in Brioni

BB aA 1st ff ct 7/8 H₂ x²
i-F 0-0 123 123 619 ¥\$ SS 01

What is OpenType?

OpenType is a cross-platform font format developed by Adobe and Microsoft. It has a potential to provide advanced typographic features such as multilingual character sets, ligatures, small capitals, various numeral styles, and contextual substitutions.

OpenType, as the new industry standard, supports Unicode, which enables the fonts to contain a large number of characters. While PostScript fonts are a technically limited to a maximum of only 256 characters, OpenType fonts can have more than 65,000 glyphs. This means that a user does not need to have separate fonts for Western, Central European, Baltic, Cyrillic or Greek languages, but could have one single file which supports all these encodings.

OpenType fonts work in all applications, however only some applications take advantage of the advanced OpenType features. Other applications will only use the first 256 characters.

Brioni Sans Std

Turkish

Typotheque Mac ve PC için orijinal fontları geliştiren ve pazarlayan, Hollanda Hague'de bulunan bir dökümcülük tipidiri. Taahhüdümüz harf tarihçesinin devamını sağlayarak, zamanımızı yansıtan kaliteli harfler oluşturarak, bağımsız tipte dökümhanelerin geleneklerini devam ettirmek ve bu ihtiyaçlara cevap vermektir. Perakende kütüphaneyi geliştirmeye ilaveten, Typotheque birçok uygulama ve

Lithuanian

Typotheque - šriftų gamybos įmonė Hagoje, Nyderlanduose, kuria ir paroduoda originalius fontus Mac ir PC platformoms. Mūsų tikslas yra puoselėti nepriklausomų šriftų kūrėjų tradiciją, prisidėti prie šrifto istorijos t stinumo kuriant kokybiškus šriftus, kurie atspindi mūsų laikmetį ir tarnauja mūsų reikmėms. Typotheque specializuojasi kurti įvairius klientų pageidaujamus šriftus, pritaikytus įvairioms programoms ir kalboms.

Albanian

Typotheque është një bashkim shtypjeje bazuar në Hagë të Hollandës, që zhvillon dhe tregëton lloje shkrimesh për Mac dhe PC-in. Detyrimi ynë është që të vazhdojmë traditat e bashkimeve të shkrimeve të pavarura duke dhënë kontributin tonë të vogël në zinxhirin e vazhdueshëm të historisë së shkrimit, duke krijuar lloje shkrimi cilësore që pasqyrojnë kohën tone dhe plotëson nevojave tona. Përveç zhvillimit të biblioteke në detaje,

Esperanto

Typotheque estas litertipaj fandejo kies sidejo troviĝas en Hago, Nederlando. Ĝi kreas kaj distribuas originalajn litertiparojn por Makintoŝ kaj PK. Nia tasko estas daŭrigi la tradicion de la memstaraj presliteraj fandejoj donante nian kontribuadeton al la senĉesa sekvo de la tipografihistorio per la kreado de altkvalitaj litertiparoj reflektantaj niajn tempojn kaj respondantaj al ĝiaj bezonoj. Typotheque ne nur produktas aĉeteblan tipkolekton

CZECH

TYPOTHEQUE JE PÍSMOLIJNA SÍDLÍČÍ V HOLANDSKÉM HÁGU, VVVÍJEJÍCÍ ORIGINÁLNÍ PÍSMO PRO MAC A PC. JSME ZAVÁZÁNÍ TRADICI NEZÁVISLÝCH PÍSMOLJEN, PŘISPÍVAJÍCÍCH SVÝM MALÝM DÍLEM DO NEUSTÁLE SE ROZVÍJEJÍCÍ HISTORIE PÍSMOVÉ TVORBY, NAVRHOVÁNÍM VYSOCE KVALITNÍCH PÍSEM, KTERÉ ODRÁŽEJÍ NAŠI DOBU A REFLEKTUJÍ JEJÍ POTŘEBY. MIMO VÝVOJE VLASTNÍHO SORTIMENTU SE TYPOTHEQUE SPECIALIZUJE

INDONESIAN

TYPOTHEQUE ADALAH PEMBUAT CETAKAN HURUF YANG BEROPERASI DARI DENHAAG DI NEGERI BELANDA, YANG MENGEMBANGKAN DAN MEMASARKAN FONTA ORISINIL UNTUK DIPAKAI PADA MAC DAN PC. KAMI MEMILIKI KOMITMEN UNTUK MELANJUTKAN TRADISI PEMBUAT CETAKAN HURUF YANG INDEPENDEN, MEMBERIKAN KONTRIBUSI MENURUT KEMAMPUAN KAMI PADA KESINAMBUNGAN SEJARAH CETAKAN HURUF, MENCIPTAKAN JENIS CETAKAN HURUF YANG SELARAS

HUNGARIAN

A TYPOTHEQUE BETŰTERVEZŐ MŰHELY, AMELY HOLLANDIÁBAN ALAKULT, HÁGÁBAN, AHOL BETŰKET FEJLESZT ÉS FORGALMAZ MACINTOSHRA ÉS PC-RE. ELKÖTELEZETTEK VAGYUNK A FÜGGETLEN BETŰÖNTÖMŰHELYEK TRADÍCIÓI IRÁNT, NAPJAINK SZŰKSÉGLETEIHEZ IGAZODÓ KIVÁLÓ MINŐSÉGŰ FONTJAINKKAL MAGUNK IS HOZZÁ SZERETNÉNK JÁRULNI A BETŰTÖRTÉNET FEJLŐDÉSÉHEZ. A STANDARD FONT-KÉSZLETKEK

HAWAIIAN

‘O TYPOTHEQUE HE WAHI HO‘OHEHE‘E HUA KĒPAU MA KA HAKA, HŌLANI, A HANA A KŪ‘AI AKU MĀKOU I NĀ HUA KUMU NO KA MAC ME KA PC. ‘O KĀ MĀKOU HO‘OHĪKI ‘ANA KA HO‘OMAU I KA MO‘OLELO LŌ‘IHI LOA O NĀ WAHI HO‘OHEHE‘E HUA KŪ‘OKO‘A, A KA MĀLAMA ‘ANA I IA MO‘OLELO ‘OKI ‘OLE ME KA HA‘AHA‘A, ‘OIAI E HANA ANA MĀKOU I NĀ HUA KĒPAU PONO A MAIKA‘I NO KĒIA WĀ. EIA A‘E, KOE KA HANA ‘ANA I KA WAIHONA HUA KĒPAU NO KE

Luxembourgish

Typotheque ass eng Schreftschmatt aus Den Hag, den Niederlanden, déi original Schreftarten fir den Mac and den PC entweckelt an vermarkt. Eis Verpflichtung ass et, déi Tradition vun onoofhängegen Schreftschmieden weider zu féieren, en ganz kleng weineg zu der fortschreidender Schreftgeschichte beizedroen, an Qualitéitsschreftarten ze kreieren, déi den Ceescht vun eiser Zeit reflektéieren an denen entspreichenden Bedürfnisser nokënnt. Zousätzlech zu der Entwecklung

Icelandic

Typotheque er leturfyrirtæki í Haag í Hollandi. Fyrirtækið þróa og markaðssetur upprunalegar leturtegundir fyrir Makka og PC. Fyrirtækið einbeittir sér að því að viðhalda hefðum sjálfstæðra leturhönnuða og leggja þannig að mörkum til að viðhalda samfellu í sögu leturgerða. Jafnframt þessu er leitast við að hanna gæðalatur sem endurspeglar nútímann og þjóðar tilgangi samtímans. Typotheque býður viðskiptavinum sínum að velja úr safni af leturgerðum en fyrirtækið

Portuguese

Typotheque é uma fundição tipográfica situada em Haia, Países Baixos, desenvolvendo e comercializando fontes originais para Mac e PC. O nosso compromisso é continuar com a tradição das fundições tipográficas independentes, contribuindo um pouco para a sequência continua da história da tipografia; criando tipos de letra de qualidade que reflectem os nossos tempos e servem as suas necessidades. Além de desenvolver a tipoteca existente, Typotheque é

Swedish

Typotheque är ett nederländskt stilgjuteri med bas i Haag, som utvecklar och marknadsför originalfonten för Mac och PC. Vårt mål är att fortsätta bidra med vår lilla bit till den fortsatta typhistoriens, skapa typsnitt som reflekterar vår tid och möter dess behov. Förutom utvecklingen av vårt kommersiella typsnittsbibliotek, specialiserar sig Typotheque på specialritade typsnittslösningar för en mängd applikationer och språk. Typotheque är ett

MALTESE

TYPOTHEQUE, HIJA FABRIKA TA' STILI TA' L-ITTAJPIAR IMWAQQFA F'THE HAGUE, L-OLANDA, LI TIŻVILUPPA U TPOĠĠI GHALL-BEJGH FIS-SUQ KUMMERĊJALI, FONTS ORIGINALI GHALL-MAC U KOMPJUTERS (PC). IL-KARIGA TAGHNA HI LI NKOMPLU T-TRADIZZJONIJIET TA' DAWN IT-TIP TA' FABRIKI INDEPENDENTI; NIKKON-TRIBWIXXU, BIL-PARTI ŻĠHIRA TAGHNA, GHAS-SEKWENZA KONTINWA TA' L-IS-TORJA TA' L-ITTAJPIAR, NOHOLQU STILI TA' KARATTRI PARTIKULARI LI JIRREFLET-

NORWEGIAN

TYPOTHEQUE ER EIT FONTHUS SOM LIGG I HAAG, NEDERLAND. VI UTVIKLAR OG SEL ORIGINAL FONTAR FOR MAC OG PC. VÅR VISJON ER Å FØRE VIDARE TRADISJONANE TIL DEI UAVHENGIGE FONTHUSA OG Å GJE VÅRT BIDRAG TIL DENNE HISTORIA VED Å SKAPE KVALITETSFONTAR SOM REFLEKTERER VÅR TID OG MØTER SAMTIDA SINE KRAV. I TILLEGG TIL Å UTVIKLE FONTBIBLIOTEKET, SPESIALISERER TYPOTHEQUE SEG I SKAPING AV SPESIALLAGA FONTAR TIL EIT UTVAL BRUKSOMRÅDE

IRISH GAELIC

IS É COMHLACHT CLÓSCRÍOBH TEILGCHÉARTA É TYPOTHEQUE ATÁ SUITE SA HAGUE SAN ÍSILTÍR AGUS A THABHARFANN FAOI UMAIR OIRIGUÍNACH A FHOIRBAIRT AGUS A MHARGADH FÁ CHOINNE AN MAC AGUS PC. IS É AIM AN CHOMHLACHT NÓ AN TRADIOIÚN CLÓSCRÍOBH TEILGCHÉARTA NEAMHSPLÉACH A LEANNAINT AR AGHAIDH AG TABHAIRT GIOTA BEAG DON SEICHEAMH LEANÚNACH DON STAIR CLÓSCRÍOBH, AG CRÚTHÚ ‘TYPEFACES’ DEN SCOTH A MHACHNAÍONN ÁR N-AM

WELSH

FFOWNDRI DEIP YDY TYPOTHEQUE YN YR HÂG, YR ÍSELDIROEDD SYDD YN DATBLYGU A MARCHNATA FFONTIAU GWREIDDOLI AR GYFER MAC A PC. EIN HYMRWYMIAD NI YW I BARHAU TRADDODIADAU FFWNDRIODD TEIP ANNIBYNNOL, GAN GYFRANNU EIN RHAN FECHAN NI 'R DILYNIANT PARHAOL O HANES TEIP, GAN GREU TEIPIAU WYNEB O SAFON SY'N ADLEWYRCHU A GWASANAETHU YR OES SYDD OHONI. YN OGYSTAL Â DATBLYGU'R LLYFRGELL ADWERTHOL MAE TYPOTHEQUE YN

Available versions

Brioni Light

Brioni Light Italic

Brioni Regular

Brioni Regular Italic

Brioni Medium

Brioni Medium Italic

Brioni Bold

Brioni Bold Italic

About the font

Brioni Sans is an elegant, humanist sans serif typeface suitable for both body and display text. It has been designed to complement Brioni, a serif typeface, but obviously it works well with other typefaces, or even on its own.

Sans serif fonts are not commonly used for running text, but the Brioni Sans family, with its classical proportions, subtle stroke modulation, meticulous spacing, and standard old-style figures, is highly suitable for setting books and magazines.

About the designer

Nikola Djurek was born in Croatia, studied in Croatia, Italy and finally in The Netherlands at postgraduate master course Type and Media at Royal Academy of Art in The Hague. Nikola is founder of Typonine studio for graphic and type design, teaches at University of Zagreb and Academy of art in Split.

ONE MORNING, WHEN GREGOR SAMSA woke from troubled dreams, he found himself transformed in his bed into a horrible vermin. He lay on his armour-like back, and if he lifted his head a little he could see his brown belly, slightly domed and divided by arches into stiff sections. The bedding was hardly able to cover it and seemed ready to slide off any moment. His many legs, pitifully thin compared with the size of the rest of him, waved about helplessly as he looked.

“*What’s happened to me?*” he thought. It wasn’t a dream. His room, a proper human room although a little too small, lay peacefully between its four familiar walls. A collection of textile sample slay spread out on the table — Samsa was a travelling salesman — and above it there hung a picture that he had recently cut out of an illustrated magazine and housed in a nice, gilded frame. It showed a lady fitted out with a fur hat and fur

boa who sat upright, raising a heavy fur muff that covered the whole of her lower arm towards the viewer. Gregor then turned to look out the window. The rain could be heard hitting the pane, which he had never noticed *about if I sleep a little bit longer* and for that that was something he was unable to do. On his right, and in his present state of mind, he never hard he threw himself onto the floor. He was. He must have tried it a hundred times. He wouldn’t have to look at the floor. It began to feel a mild, dull pain

“*Oh, God*”, he thought, “*what a life!*” *Travelling day in and day out. Less than doing your own business. In travelling, worries about making contact with different people all the time or become friendly with them.* He pushed his belly; pushed himself slowly that he could lift his head because it was covered with lots of little legs make of; and when he tried to move quickly back because as soon as he shudder.

He slid back into his former form. He thought, “*it makes you stupid.*” *Travelling salesmen live a life of luxury.*

ONE MORNING, WHEN GREGOR SAMSA found himself transformed in his bed into a horrible vermin. He lay on his armour-like back, and if he lifted his head a little he could see his brown belly, slightly domed and divided by arches into stiff sections. The bedding was hardly able to cover it and seemed ready to slide off any moment. His many legs, pitifully thin compared with the size of the rest of him, waved about helplessly as he looked.

“*What’s happened to me?*” he thought. It wasn’t a dream. His room, a proper human room although a little too small, lay peacefully between its four familiar walls. A collection of textile sample slay spread out on the table — Samsa was a travelling salesman — and above it there hung a picture that he had recently cut out of an illustrated magazine and housed in a nice, gilded frame. It showed a lady fitted out with a fur hat and fur boa who sat upright, raising a heavy fur muff that covered the whole of her lower arm towards the viewer.

Gregor then turned to look out the window. The rain could be heard hitting the pane, which he had never noticed *about if I sleep a little bit longer and for that* that was something he was unable to do. On his right, and in his present state of mind, he never hard he threw himself onto his floor. He was. He must have tried it a hundred times. He wouldn’t have to look at the floor. It began to feel a mild, dull pain

Vitamin B ‘puts off Alzheimer’s’
Taliban chief says victory close
Erdogan raps rivals ahead of poll
Police may have shot HK hostages
US slips in competitiveness poll
Google unveils ‘instant’ searches

BRIONI SANS BOLD, 26PT

Merkel defends Danish cartoonist
Iran opposition lawyer detained
Planes nearly collide over London
Second Iraqi TV presenter killed
British hostage freed in Pakistan
Indian caste census due in 2011

BRIONI SANS LIGHT, 26PT

Rig firms hit back at BP report
Obama defiant on tax cut stance
Mexico crime ‘like an insurgency’
Honduras massacre ‘gang rivalry’
South Sudan vote is ‘time bomb’
SA murder rate shows sharp fall

BRIONI SANS REGULAR, 26PT

Overview of supported OpenType layout features

i¿ab?! (doh-ehg) ▶ i¿AB?! (DOH-EHG)

i+ Case Sensitive forms (CASE)
When function 'change to caps' is applied from within an application (not when text is typed in caps) appropriate case-sensitive forms are automatically applied. Regular brackets, parenthesis, dashes and hyphens are replaced with their capital forms.

Small Caps ▶ SMALL CAPS
All Small Caps ▶ ALL SMALL CAPS

aA Small Capitals & All Small Caps (SMCP & C2SC)
In Adobe applications there are two methods of applying small capitals. The first one, Small Caps (0 26H) fig. 1 replaces only lower case letters with small caps. The second method, All Small Caps, fig. 2 replaces also capital letters with small capitals, and replaces regular quotation marks, exclamation points and question marks, slashes and asterisk with lowered small caps variations.

012345 ▶ 0̇12345
012345 ▶ 0̇12345

00 Slashed Zero (ZERO)
Because in some circumstances '0', can be mistaken for an 'O', alternative forms of 'slashed zero' are available for all styles of figures

fīffīffīffīfhk ▶ fīffīffīffīfhk
fī ▶ fī
fī ▶ fī

fi Standard Ligatures (LIGA)
Standard ligatures are those which are designed to improve the kerning and readability of certain letter pairs. For example, when this feature is activated, typing 'f' and 'i' will automatically produce the 'fi' ligature. Using ligatures does not affect the spelling and hyphenation of your text in any way.

21/2 31/10 4125/5100 ▶ 2½ 3¼ 4¹²⁵/5100

7/e Arbitrary Fractions (FRAC)
Typotheque OpenType fonts already include a number of pre-designed fractions. Other arbitrary fractions are easily made by using the fraction feature.

(1) (2) (3) [4] [5] [6] ▶ ① ② ③ ④ ⑤ ⑥
--> -> <-- ^- ^- ▶ → → ←↑↓
-----> ▶ →

ct' Discretionary Ligatures (DLIG)
Brioni includes handy features such as replacing hyphen and greater than/less than signs with real arrows, or automatic activation of circled numerals by enclosing them in parenthesis when the discretionary ligature feature is activated. Brackets activate alternative inverse enclosed numerals. Discretionary ligatures are off by default in Adobe applications.

x(1+1.42 × 6) = y37 ▶ x^(1+1.42×6) = y³⁷

x² Superscript / superiors (SUPS)
Replaces all styles of figures (old style, tabular, lining) and letters with their superior alternates, which can be used for footnotes, formulas, etc. Superior characters are more legible than mathematically scaled characters, have a similar stroke weight, are spaced more generously, and better complement the rest of the text.

H2O (10,00 + \$500) ▶ H₂O (10,00 + \$500)

H₂ Subscript / inferiors (SINF)
Replaces all styles of figures (old style, tabular, lining) and letters with their inferior alternates, used primarily for mathematical or chemical notation. Inferior characters are more legible than mathematically scaled characters, have a similar stroke weight, are spaced more generously, and better complement the rest of the text.

{{[012-3456-789]}}
({[012-3456-789]})
({{012-3456-789}})
({[012-3456-789]})

- 123 Tabular Lining Figures (TNUM_LNUM)
 - Tabular Oldstyle Figures (TNUM_ONUM)
 - 123 Proportional Oldstyle Figures (PNUM_ONUM)
 - 619 Proportional Lining Figures (PNUM_LNUM)
- Changes figures to any selected style: Lining figures which fit better with all-capital text, old-style figures, for use in a flow of lowercase and upper case text, or tabular (fixed width) versions.

1st 2nd 3rd Mlle No1 ▶ 1st 2nd 3rd M^{lle} №1

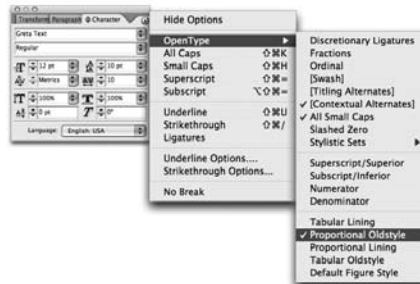
- 1st Ordinals (ORDN)
- The ordinals feature replaces alphabetic glyphs (but not numerals) with their corresponding superior forms.

€ \$ £ ¥ ¢ € € ¤ € ¤ ¤ € ¤ ¤ ¤ € ¤ ¤ ¤ € ¤ ¤ ¤ ¤ € ¤ ¤ ¤ ¤ € ¤ ¤ ¤ ¤

- ¥ \$ Currency (CRCY)
- Collection of various currency symbols: (U+20A0..U+20CF)

[[(())]] ▶ [[(())]]

- SS 01 Stylistic Sets (sso1)
- Brioni includes some alternative characters which can be activated by turning on 'stylistic sets'. They make for an easy access to open brackets and paranthesis.



OpenType font format allows including more characters inside one single font file, so there is no need to have separate fonts for Old-style, Tabular, Lining figures, ornaments or small caps, given you are using an OpenType-savvy application such as Adobe InDesign®, Adobe Illustrator®, QuarkXPress 7, etc. Instead of selecting a different font, one only need to activate an OpenType feature which controls the desired OpenType layout feature.

OpenType fonts can contain various styles of numerals within one font. These different types of numerals are controlled by your typesetting application (such as Adobe InDesign®, Adobe Illustrator®, QuarkXPress 7, etc) Please note that not all applications support OpenType features. The software which cannot access these advances, for example Microsoft Word® will use only display 'default' figures. If you do not specify which style of numerals you would like to use, the application will use the 'default' figures. Brioni, for example, uses proportional lining figures as default.

For example, to access Small Caps, go to **Character** menu, and select **Small Caps**. Alternatively you can use a shortcut Command+Shift+H.

If you go to **Character** and then **OpenType** menu in Adobe applications, there you can change the numbers to any other desired numeral style.

Font overview

Family name	Brioni Sans Std
Designed by	Nikola Djurek
Released	September 2010
Font format	OpenType PS
Supported encodings	Latin 1 (1252), Latin 2 –Central European (1250), Turkish (1254), Baltic (1257), Superscripts & Subscripts, Number forms, Arrows, Currency symbols
Supported languages	Brioni Text Std supports following languages: Afrikaans, Basque, Bokmål, Bosnian, Breton, Catalan, Croatian, Czech, Danish, Dutch, English, Esperanto, Estonian, Faroese, Finnish, French, German, Greenlandic, Hawaiian, Hungarian, Icelandic, Indonesian, Irish Gaelic, Italian, Latvian, Lithuanian, Luxemburgish, Maltese, Norwegian, Polish, Portuguese, Rhaeto-Romanic, Romani, Romanian, Sami, Serbian (Latin), Slovak, Slovene, Sorbian, Spanish, Swahili, Swedish, Turkish and Welsh
Number of characters per style	1002
Number of fonts in family	8
Supported OpenType features	Capital Spacing (CPSp), Slashed Zero (ZERO), Denominators (DNOM), Arbitrary fractions (FRAC), Subscript/inferiors (SINF), Superscript/ Superiors (SUPS), Case-Sensitive Forms (CASE), Small Capitals From Capitals (C2SC), Small Capitals (SMCP), Oldstyle Figures (ONUM), Lining Figures (LNUM), Tabular Figures (TNUM), Proportional Figures (PNUM), Ordinals (ORDN), Stylistic Alternates (SALT), Stylistic Sets (SS01), Standard Ligatures (LIGA), Discretionary Ligatures (DLIG), Ornaments (ORNM), Access all Alternates (AALT), Glyphs composition/decomposition (CCMP)
Available at	www.typotheque.com

For the complete list of applications taking advantage of OpenType layout features please visit

www.typotheque.com/fonts/opentype_feature_support

Typotheque

Zwaardstraat 16, 2584 TX Den Haag, The Netherlands

E: info@typotheque.com, T: +31 70 322 6119, F: +31 84 831 6741