

# Audree

Audree is a customisable parametric type system offering hundreds of font styles. A generous selection of construction models (15 different serif shapes, two construction principles and two types of typographic contrast, plus stencil and inline versions)

➤ [Watch this video about the Audree type system](#)

➤ [Read more about the Audree type system](#)

➤ [Order the Audree specimen](#)

AVAILABLE IN

Latin

MORE

Rent

Buy Audree

AWARDS

Typographica Favorite Typefaces of 2013

MORE

Rent

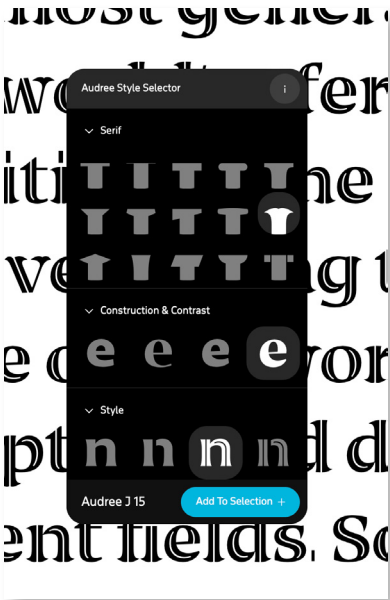
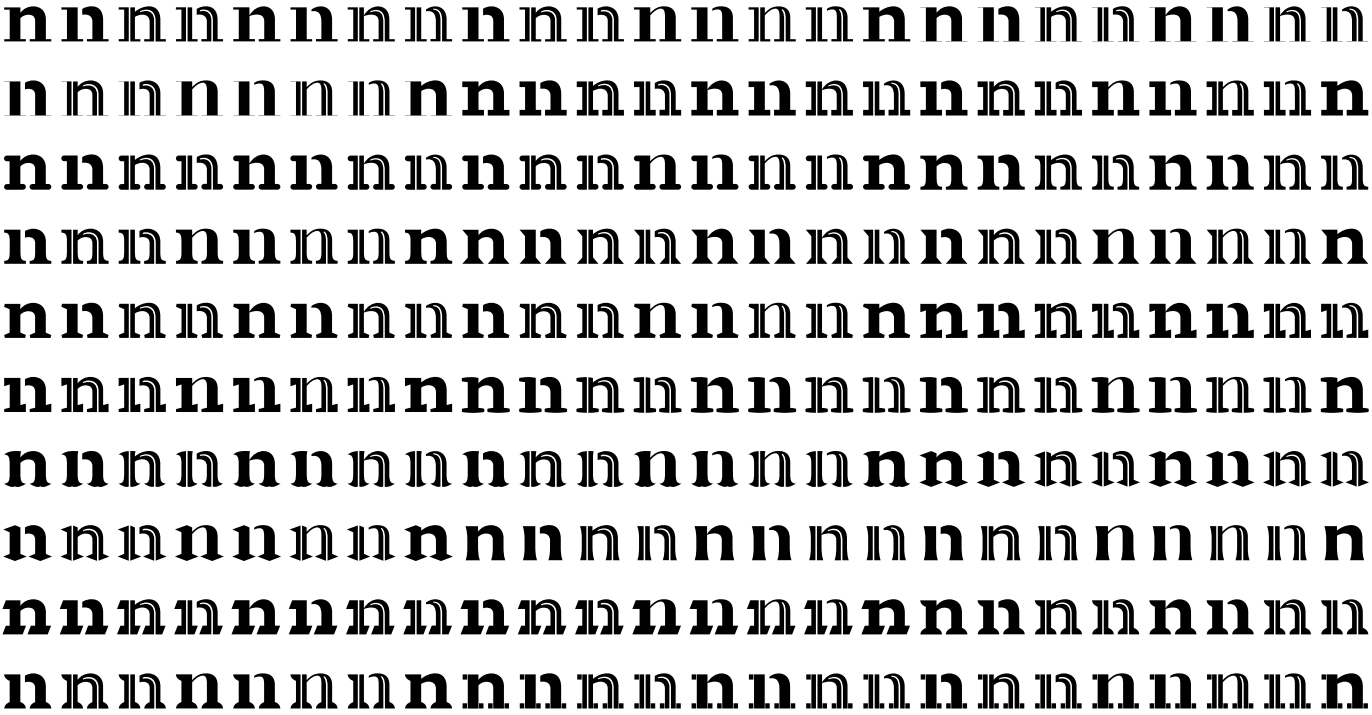
Buy Audree

# Type System Overview

## STYLES

There are 240 individual font styles to suit all tastes. Looking for something classic? Try E13 (Serif Style 5, Translation, High Contrast, Normal Style). Need something inspired by architectural lettering? You could use L6 (Serif Style 12, Expansion, High Contrast, Stencil). Starting up a metal band and want to have some edgy serifs in your new logo? We suggest K2 (Serif Style 8, Expansion, Low Contrast, Stencil).

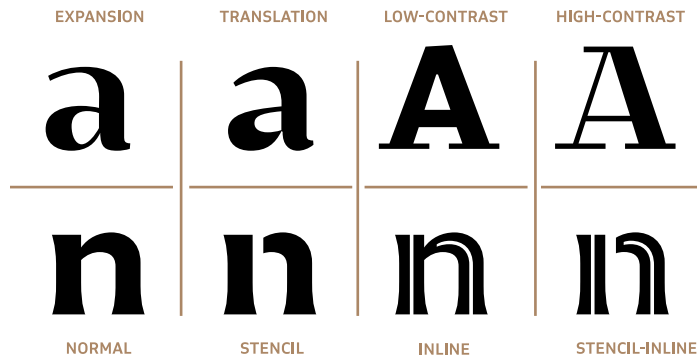
[Audree Style Selector](#) will assist you to choose and visualize your preferred parameters.



## Design Information

### DESIGN CONCEPT

Audree is a customisable parametric type system offering hundreds of font styles. A generous selection of construction models (15 different serif shapes, two construction principles and two types of typographic contrast, plus stencil and inline versions) lets you see how each variable subtly affects the shapes of the words. Audree's creative potential and variable combinations make it a perfect fit for display purposes such as magazine headlines, logos, types or expressive identity systems.



Disco  
Musik  
Tanz

[Order the Audree specimen](#)



# Amsterdam

K 1 | 34 pt

# Bengaluru

A 16 | 34 pt

# Copenhagen

L 10 | 34 pt

# Damascus

O 15 | 34 pt

# Edinburgh

M 9 | 34 pt

# Fortaleza

H 9 | 34 pt

# Guangzhou

C 9 | 34 pt

# Hong Kong

B 15 | 34 pt

# Istanbul

A 14 | 34 pt

# Jerusalem

F 13 | 34 pt

# Kathmandu

D 3 | 34 pt

# Luxembourg

L 1 | 34 pt

# Montevideo

E 1 | 34 pt

# New Delhi

M 5 | 34 pt

# Ouagadougou

H 5 | 34 pt

# Providence

C 2 | 34 pt

# Quebec City

B 13 | 34 pt

# Reykjavík

N 2 | 34 pt

## Credits & Information

### DESIGN

[Nikola Djurek](#) (Latin), [Marko Hrastovec](#) (Latin)

### ENGINEERING

[Roberto Arista](#) (Latin)

### CURRENT VERSION

1.005

### RELEASED

2013

### AVAILABLE FORMATS

OTF, TTF

All font formats are available in WOFF and WOFF2.  
Request special font formats at checkout.

### AWARDS

Typographica Favorite Typefaces of 2013

### END USER LICENSING AGREEMENT (EULA)

Learn about which license suits your needs best by visiting <https://www.typotheque.com/licensing/eula>

### CONTACT

For questions concerning font licensing, pricing, technical questions and for general enquiries please write to: [info@typotheque.com](mailto:info@typotheque.com)

For questions concerning physical products, such as books, t-shirts or posters, please write to: [books@typotheque.com](mailto:books@typotheque.com)

Typotheque © 1999 – 2022  
All Rights Reserved

TYPOTHEQUE  
Koningsplein 12  
2518 JE The Hague  
Netherlands  
Phone: +31 70 322 6119  
[www.typotheque.com](http://www.typotheque.com)  
Instagram: [@typotheque](https://www.instagram.com/typotheque)  
Twitter: [@typotheque](https://twitter.com/typotheque)  
Vimeo: [@typotheque](https://vimeo.com/typotheque)